

Auction

2-DAY SALE

FRIDAY

SATURDAY

APR 24

APR 25

10AM

10AM

2020

TRACTOR & COMBINE
SHOP & FARM EQUIP.

TRUCKS & TRAILERS
CATTLE EQUIPMENT

Triple D Farms & Others

FRI. APR 24, 2020 - 10AM

From Conlen, TX: Junct Hwy 54 & 807 on N. Side of Tracks.
From Stratford, TX: 12 W on 54 From Dalhart, TX: 22 E on 54



1994 JD 9600 w/930 30" Headers and Extra Parts, 1912 Eng Hrs, 1454 Sep Hrs



1979 Chevy Scottsdale C70 Tandem w/22' King Bed & Hoist, w/62193 mi, w/West Field Auger



1993 JD 8770 4x4 w/18.4 R46 duals No PT 5729 Hrs, Very Clean



(2) Kinze 800 Bu. Grain Kart 1 needs Auger Repair



1973 JD 4430 Standard Shift



Flex King 7x5' Sweep w/Pickers, Very Clean



1992 GMC. w/60 Series Detroit, w/16' Dirt Boy, w/Tarp



455 JD Folding Drill 32", 8" Spacing

Shawn Meidinger & Others

SAT. APR. 25, 2020 - 10AM

From Stratford, TX

1/2 Mi East on 54, South of Airport



2012 Case IH 8120, w/520/58 R4Z Duals, w/2564 Engine Hrs. 1899 Separate hrs.



2010 Case IH 12-Row 30" Model 3412, VIN YA5023800,



2016 MacDon D65-D Draper 40' Header, w/Pickup Reel, VIN 293026



JD 8 Row 30" Row Crop Header 853A



Case IH 9330 Row Crop, w/18.4v38 Duals, VIN JEE0075874, w/Degelman Dozer Bld



Case IH 7140, w/KD Loader, w/Bucket & Bale Forks, 8921 Hrs., w/480.80 Tx46"



Case IH Precision Spray, Like New



1985 Versatile 956 w/3pt No PTO, w/24.5 R32 Duals 50%, VIN 230082

Auctioneer
TERRY SHORES
License #10092

SHORES

Route 1 Box 81H
Goodwell, OK 73939
(580) 349-2455 Cell (806) 339-3490

Visit us at www.globalauctionguide.com or www.shoresauction.com

Contact: Terry Shores - 806-339-3490 - Don Aduddell 806-753-6616 and Ted Zieman 806-333-5710 - Shawn Meidinger 806-753-6557

FROM: Conlen, TX
Hwy 54 & Junction 807
on N. side of Tracks

TRIPLE D FARM & OTHERS

FRI. - APR. 24, 2020 - 10am

FROM: Stratford, TX
12 Mi. W. on 54
FROM: Dalhart, TX
22 Mi. E. on 54



1997 Mack RD Day Cab Air Ride, 10 sp.



2004 Chev 3/4 Ton Extended Cab 4x4, 15,000 miles



Hancock 32' Chisel



16' Truck Bed



Pickup Service Bed



Sunflower 1433-28' Disc, Very Clean



DMI E Colo-Tiger 530 Ripper w/Crumbler



9-Shank Fertilizer Applicator



JD 8-Roll May Emerge 2



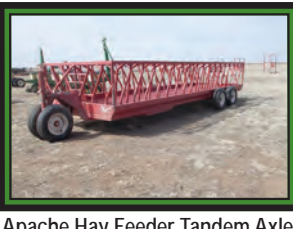
Flex King 7.6' Sweep w/Pickers, Very Clean



Filson Calf Table w/Alley Way, Very Nice



1000 gal. Water Trailer



Apache Hay Feeder Tandem Axle, Very Nice



6-12' & 14' Cattle Guards



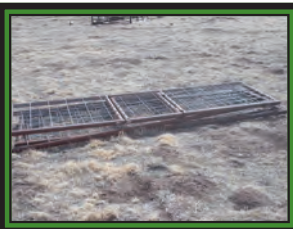
2-Horse Palpation Chutes



Small Loading Chute



Horse Bay Stall



Sheep Panels



Drag Type Hay Rack w/Seat



JD Springtooth



Ideal Arc Lincoln 250 Welder



5' Round Welding Table



Automatic Mist Blower



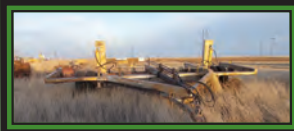
Gear Head



West Field Truck Tailgate Auger



Richardson 35' 7x5' w/Picker



Ripper Hmade Straight Drag Type



3 - Hamby Tool Bars 2 w/Fertilizer Shank, 1 w/Chisel



Krause 5x6 7x5' Sweep



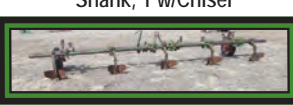
2 - 8300 JD Drills



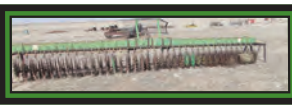
3pt Clod Buster



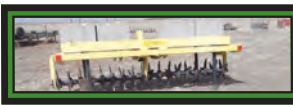
30' Roller



3pt. Tool Bar w/5 Listers



JD 20' 400 Rotary Hoe



3pt Sand Fighter

ONLINE BIDDING ON SELECT ITEMS AVAILABLE
For Both Sales - through equipmentfacts.com

Go to www.perkinsauctioneers.com and click on the link to view the catalogue and bid.

A 3% buyers premium will be charged on all online purchases only.

FROM: Conlen, TX
Hwy 54 & Junction 807
on N. side of Tracks

TRIPLE D FARM & OTHERS

FRI. - APR. 24, 2020 - 10am

FROM: Stratford, TX
12 Mi. W. on 54

FROM: Dalhart, TX
22 Mi. E. on 54



(2) Pickup Bed Trailers



Custbuster Springtooth Harrow



20' Tye Drill



(2) Shaffer One-ways



Roll-A-Cone Tool Bar



Waldon 2-Drill Hitch



Hamby Tool Bar w/5 Shanks



Tool Bar w/5 Shanks



30' Air Reel



(2) 930 JD Headers



30' Hamby Tool Bar

MANY OTHER ITEMS TOO NUMEROUS TO MENTION

AUCTIONEER NOTE

Triple D has changed their operation to cattle only and will offer the pictured equipment for sale.

DHS DIRECTIVES - BOTH SALES

1. Only those persons with a valid buyer number will be allowed into the auction area.
2. Those persons entering the auction area will maintain a level of social distancing to coincide with the standards set forth by the attached Department of Homeland Security Document. Those persons will be required to maintain a face covering consistent with the directive. It is also strongly suggested that gloves be worn.
3. At the conclusion of the auction, all purchases will be removed same day if practicable. Should additional time be required to remove purchases, arrangements need to be made with auction staff since no one will be allowed into the auction area without a bill of sale.
4. These directives will be enforced. Should a person refuse to abide by these terms, they will be required to leave the auction area.
5. **PRE-REGISTRATION:** To pre-register, please call Lisa Hogan, (806) 339-4879.

AUCTIONEER'S NOTE 2 FOR BOTH SALES

Bring your own sandwich. We will have a picnic.

CALL IN BIDS TO TERRY SHORES
806-339-3490



Craftsman 42" Mower



Grasshopper Zero Turn w/60" Deck, Runs



Extra Colter Parts

Auctioneer
TERRY SHORES
License #10092

SHORES

AUCTION SERVICE

Route 1 Box 81H
Goodwell, OK 73939
(580) 349-2455 Cell (806) 339-3490

Visit us at www.globalauctionguide.com or www.shoresauction.com

Contact: Terry Shores - 806-339-3490 or 580-349-2455 – Don Aduddell 806-753-6616 and Ted Zieman 806-333-5710

TERMS

Cash or check with proper I.D. day of sale. Settlement must be made day of sale. All descriptions of items are believed to be correct, but are in no way a warranty or guarantee. All items sold "As is, Where is" on personal inspection of the purchaser. All announcements made Sale Day are final and have priority. We are not responsible in case of accidents or theft of any item. Buyer will have 1 month to remove items.

Auction

SATURDAY

APR 25th

10AM

2020

TRACTOR & COMBINE
SHOP & FARM EQUIP.

TRUCKS & TRAILERS
CATTLE EQUIPMENT

LOCATION: STRATFORD, TEXAS - 1/2 MI EAST ON HWY 54 - JUST S OF AIRPORT

SHAWN MEIDINGER & OTHERS

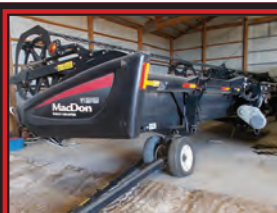
Due to health reasons, I have been forced to retire and will offer the following equipment for sale.



2012 Case IH 8120, w/520/58 R4Z Duals, w/2564 Eng Hrs. 1899 Sep hrs.



2010 Case IH 12-Row 30" Model 3412, VIN YA5023800,



2016 MacDon D65-D Draper 40' Header, w/Pickup Reel, VIN 293026



Case IH 9330 Row Crop, w/18.4v38 Duals, VIN JEE0075874, w/Degelman Dozer Bld



Case IH 7140, w/KD Loader, w/ Bucket & Bale Forks, 8921 Hrs., w/480.80 Tx46"



1989 Mack R Tandem Axle 10 Sp, w/21' B&H, 11Rx24.5



1993 Int 4 Door 2 Ton Srv. Truck



Mack CH600, w/11 R24.5 Spring Ride, 669876 mi 4 Spd



1991 Tempte 42'



Case IH Precision Spray, w/90' Boom, Like New



1977 Great Dane 53' Drop deck, w/side pullout Wench Sprd Axle



1985 Transcraft Model TL 90K-45 End Dump w/Tarp



2005 Lufkin 53' Flatbed



2007 Timpte 42' Trailer w/ Electric Roll-over Tarp, 102' wide w/72" Sides, w/Air Ride



1985 Versatile 956 w/3pt No PTO, w/24.5 R32 50%, VIN 230082



2006 Ford F250 4 Dr w/4x4, w/Eroire, Bed Hyd Tailgate, PS, 100971 mi



2010 Ford F250, 4x4, Flat Bale Bed 132464



Norle Flat Bed Fit Dodge 3/4 Ton



2011 GMC 2500 Salvage, Dura Max Auto w/Pronghorn Bed



Donahue Spray 1000-Gal Water Hauler, w/2" Pump



32' IHC Tandem Disk



32' JD Double Offset Disk



Quinn Star 42' Field Finisher, Very Clean



2013 Great Plain 40' Drill, Like New



Sunflower 5x5' Sweep



Hesston 1150 12" Drag Swather



8000 Gal Fuel Tank



Wheatheart Semi Auger, w/
Honda Motor, Like New



42' Sunflower Follow King
w/Pickers



Versatile 9x6' Sweep



Woods 8' HYD Tilt and Angle
Back Blade



Delgema Frt Blade



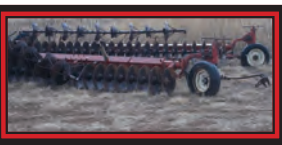
Homemade 2000 Gal



2 - Orthman 800 Grain Karts



35' Bunkhouse



2 - IHC One Ways



IHC Springtooth 332'



JD 7-Shank 3pt Straight Ripper



Woods 20' Flex Shredder



Krause 7x5'



2009 S&H 16' Stock Trailer
Bumper Pull Full Top



Stidham Gooseneck 24' Stock,
w/Canvas Top



Nice Head Gate Preg Test Chute



App 140-6" Wood Post



Richardson Picker Parts



Dan Houser PTO Post Hole
Digger, w/8&12" Auger



3pt Post Puller on Boom



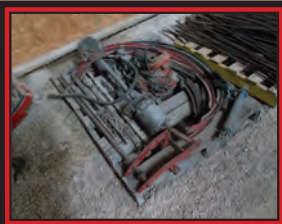
Powder River Loading Chute



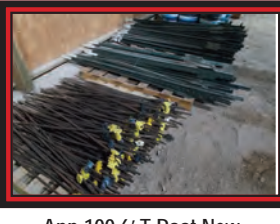
Round Bale Hay Feeder



Round Bale 2-WHL Trailer



Lot of IH Combine Parts



App 100 6' T Post New
Lot used 6' Tee Post



28 Rolls New 1/4 Mile Rolls of
Barb Wire



27 Rolls Used Barb Wire



Easy-Roll Wire Roller w/Ext. Spools



Homemade 21' Flat Bed Trailer
Steel Floor



2 Wheel Service Bed Trailer



3 - HD 800 MM Motors, Good Mtr
1 - HD 800, Needs Valve Job



500 gal LP Tank



2 - Wood Bolt Bins



Infra-Red Oil Heat Vlv 6, Like New



Hughes Steam Power Washer



Truck Transmission



Hyde Valve, Ind. 13 Hp Air Comp



40' 4" Tow Rope

SHAWN MEIDINGER & OTHERS

APRIL 25, 2020 - 10am

Shawn Meidinger 806-753-6655

FROM: Stratford, TX
½ Mi. E of Stratford on
Hwy 54, South of Airport



JD 770-A Road Grader Runs Good



2012 Monsem 24 Row w/Twin Rows, App 2000 Ac on New Disk & Chain w/Top Cam Monitor, Been Shredded



1991 JD RW4960 Vin #1055 PS w/Otter Blade



1993 JD RW4960 Vin #P007314 PS



2000 Boomer 4-Horse Slant w/13' Short Wall Sleeping Quarters



2003 Ford F650 4-Dr Auto Trans. Cat Engine, Super Cruiser, Jake Brake, 72551 mi Very Clean



Generator 150 KW w/12 Wire. Could be wired 3-Phase or 240 or 480, 3-Phase Allis Motor on Trailer



Macdon 973 Harvest Header 36' Draper w/Pickup Reel w/New Seat of Draper, Been Shredded



Pronghorn off Shot Bed Chevy



(2) Chev 454 Irr Mtrs Need OH



750 gal Fuel Tank Trlr w/12V Pump



Walk Behind Sprinkler Caddy w/ Traks w/Canycom OHV Engine



4-Self Feeders



Chemical Inductor JD Skiles Pit Stop w/3" Elect. Honda Eng w/4 50 Gal Stainless Steel Cyl Upright



Merritt Semi Headache Chain Rack & Toolbox



JD 8 Row 30" Row Crop Header 853A



IH BJM Feed Truck w/Scales



1999 350 Ford Dually



2012 JD RSX Gator 850i 579 hr, 5087 mi w/Dump Bed



2009 Grizzly 10,019 mi.



2015 Yamaha



40' Drop-deck Equip. Trailer



32' Krause Tandem Disk

Auctioneer
TERRY SHORES
License #10092

SHORES

Route 1 Box 81H
Goodwell, OK 73939
(580) 349-2455 Cell (806) 339-3490

Visit us at www.globalauctionguide.com or www.shoresauction.com

Contact: Terry Shores - 806-339-3490 or 580-349-2455 - Shawn Meidinger 806-753-6655

TERMS

Cash or check with proper I.D. day of sale. Settlement must be made day of sale. All descriptions of items are believed to be correct, but are in no way a warranty or guarantee. All items sold "As is, Where is" on personal inspection of the purchaser. All announcements made Sale Day are final and have priority. We are not responsible in case of accidents or theft of any item. Buyer will have 1 month to remove items.