

Auction

2-Day Sale

SATURDAY

SATURDAY

JULY 11

JULY 18

9AM

9AM

2020

TRACTOR & TRUCKS
SHOP & HOUSEHOLD

CARS & PICKUPS
ANTIQUES & RECREATION

HELEN SPARKMAN EST & OTHERS

PERSONAL REPRESENTATIVE: DENNIS SPARKMAN - 405-274-4689

SAT. JULY 11, 2020 - 9AM

From ELKHART, KS: 9 mi SW on 56 Hwy to MM NS55 or Cimarron County Line, 1/8 mi S

From Keyes, OK: 16 mi NE on 56 Hwy to MM NS55 or Cimarron County Line, 1/8 mi S



2006 Saturn Vue 4-Door



1972 Chevy Custom 10 - 4x4 Long Stepside Bed, Needs Restored



Powder River Alleyway w/2 Extra Panels, Reg. Chute & Calf Chute



Drexel 3-pc Bedroom Suite, Queen Bed, Very Nice



Allis 7060 3pt Duals, As Is



1974 Fruehuf 40' x 9' Cattle Trailer



VPS Subsoiler, 7 Shank 3 pt



Great Plain 3 pt 7 1/2 Spacing Solid Stand

TED FIELDS ESTATE & OTHERS

PERSONAL REPRESENTATIVE: SARAH FIELDS - 580-461-1992

SAT. JULY 18, 2020 - 9AM

From ELKHART, KS: 17 mi S on Hwy 95, 1/2 W on Hwy 64

From GUYMON, OK: 29 mi NW on Hwy 64, S Side

From BOISE CITY, OK: 33 mi E on Hwy 64, S Side



1957 Ford Fairlane 500 2-Door Retractable Hardtop, Restored, 16867 mi on OH, Very Clean



1988 Sea Ray V Hull 17 Boat, Inboard Outboard, Very Clean



Kodiak 4x4 400 w/Frt Snow Blade



Kawasaki Bayou



Pool Table 7'5" w/ESPN on side, Very Nice



3-Whl Trike w/Motor



JD 3020 w/3pt 540 & 1000 PTO w/Egging Cab



Tractor Supply 16' Car Trailer

LUNCH
SERVED

Auctioneer
TERRY SHORES
License #10092

SHORES

Route 1 Box 81H
Goodwell, OK 73939
(580) 349-2455 Cell (806) 339-3490

Visit us at www.globalauctionguide.com or www.shoresauction.com

Contact: Terry Shores - 806-339-3490 Dennis Sparkman - 405-274-4689 Sarah Fields - 580-461-1992

From ELKHART, KS:
9 mi SW on 56 Hwy
to MM NS55 or
Cimarron County
Line, 1/8 mi S

HELEN SPARKMAN EST & OTHERS

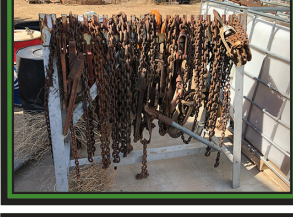
PERSONAL REPRESENTATIVE: DENNIS SPARKMAN - 405-274-4689

SAT - JULY 11 - 9 AM

From Keyes, OK: 16
mi NE on 56 Hwy to
MM NS55 or Cimarron
County Line, 1/8 mi S



HOUSEHOLD: Baldwin Piano, (2) Recliners, 1 Elect, Oval Table w/6 Chairs & 4 Matching Bar Stools, Health Rider Pro 500 Exercise Mach., Magnavox Stereo Cabinet, New Mr. Heater LP, Maytag Washer & Dryer, Oster Microwave & Mixer, Lots Tupperware, Dishes, Glasses, Bowls, Vases, Silverware, Corning Pie Plates, Lots Christmas Tins, Tablecloths, Collectible Knowles Plates from Bradford Exchange, Lots Pyrex, Baseboard Heaters, Lots Pictures & Mirrors, Lots of Christmas, Lots Hats, Lot Fans, (5) Wood Chairs, (2) 3-Shelf Units w/Lower Doors, Lot Knick Knacks, (2) Eden Pure Heaters, Air Purifier, Quilt Rack, **TABLES:** Kitchen, Lamp, Oval Coffee, Round w/2 Chairs, Desk-Dining Room w/Leaves, **BEDROOM:** Drexel 3 pc Queen Bed Very Nice, Desoto 4 pc Queen Bed Very Nice, Thomasville Upright 3-Drawer, King Size Bed 3 pc, 6' Foot of the Bed Storage Chest, **ANTIQUE:** Juicers, Scales, Ironrite Mangle, Lot Steel Wheels, Lot Windmill Blades, Secretary Hutch, Upsy Daisy Child Potty Trainer, Waffle Iron and Toaster, Lot Coin Glassware, (3) pieces Monterrey Western Ware. Gunsmoke Lunch Box w/Thermos. Singer Pedal Sewing Machine, Round Clock, 12' 1/2 Round Couch, Butter Press, Lot Steel Irons, Roi-Tan Cigar Box w/Matches, Model 500 A Singer Sewing Machine w/Blonde Cabinet, Lot Hats, Trunks, **MISC ANTIQUES:** 3-Shank Furrow Plow, V Peg-tooth Harrow, Steel Lug Wheel, (2) 4-Row Cultivator, (2) Steel Whl Frt Tractor Axle. 10' Hamby Chisel, (2) Combine Bins, Wood Burning Stove, Cream & Milk Cans, Milk Bottles, Stanley Block Plain - New, (2) Tree Cross Cut Saws, (2) Old Scales, Lot Insulators, Horse Hames, Lot Glassware, Several Wood Cabinets. Western Flyer Girl's Bicycle, Honda 90 w/Yamaha Gas Tank, Lots of Steel Spoke Wheels, Lot of Windmill Blades, **MISC:** Yamaha 3-Whlr - As Is. Allis Mower - As Is, GT 19.9 Mower - As Is. 100 gal. Spray Tank w/4HP Mtr - As Is, 3-Row Tar Paper, 30-Gal LP Bottle, Cub Cadet 110 Mower - restored, LG Upright Washing Mach., **CATTLE EQUIPMENT:** Powder River Alleyway w/2 Extra Panels w/Reg & Calf Chute, Lot of Galvanized Sprinkler Pipe Forms 2 1/2" x 6", Lot Round Bale Feeders, (5) Orange Panels, (6) Red Gates 12' & 14', Lots of Panels and Gates, Lot Sucker Rod & Smooth Wire, 20' of 8" Channel Iron, Lot Troughs, Bale Feeders, (2) Bale Spear Fits in Pickup 1-Electric, (5) 5-gal Buckets of Goffier Bait, Nice Squeeze Chute, Cattle Oiler, Lot High Line Poles, My-D Han-D Head Gate, 12-Volt Posthole Digger, Refrigerator Full Vet Supplies, **MISC. EQUIP:** Lot of Tractor Wts, 6' Bucket (2) Water Tanks, Pickup Fuel Tank, App. 80' Tapered Steel Pole, (2) Hay Forks, Diamond Packer, **CHISELS:** Krause 21', (3) Hamey 16', Lot Chisel Shanks, (3) Krause Oneways, IHC 82 Lister - 6 rows, 5-Row Drag Knife Sled, 3-Row & 5-Row 3pt Knife Sled, Old Drag-type Grader, 8' 3pt Back Blade, 2 pt Cycle Mower, 5-Section Drag Rotary Hoe, 6-Row JD 3pt Lister, 6-row Lilliston, Underground Water Tank 4' High Up and Over Step w/Hand Rails, Lot of Rock, Hand Crank Boom, VPS Subsoiler 7 Shank 3pt, Great Plain 3pt 7 1/2 Spacing Solid Stand 20 Drill, Krause 2300 35', Fertilizer Caddy 2-Whl Trailer Band Wagon, (2) Richardson Pickers, (3) Dempster Hoe Drills, Lot Moline Grain Drills, A-Frame, (6) Fertilizer Tanks, Lot Hyd Cylinders, Lot JD Planter Brkts, (71) Flex Planter Parts, Hyd Wet Kit, Flex King Picker Brkts, John Blue Pump, Sevrsl Barrels Conklin Oil, 30-Gal Tank w/Hand Sprayer, (1) Barrel Essentialube. Lot Furrow Disc, Lot Flat Irons, Hand Crank Oil Pump, Lot Scrap Iron, **TRAILERS:** 40' Flatbed, as is, 1974 Fruehauf 40' x 9' Cattle Pot, 18' Car, HD Dual Transport Dual Whl Tilt Frame, **TRUCK & PICKUP as is:** 1981 GMC Sierra w/24' Bed & Lift w/Drill-fill Auger, Tandem Axle, 1970 White Cab-over w/22' Jet-co Bed & Lift, 1967 Chev 60 Series Single Axle, Bed & Lift, 1985 Pontiac Car, 1971 Chev Pickup-2 whl, Chev Cab & Chassis2 whl, Chev Custom Deluxe Diesel, Chev Custom 20 No Motor 4x4, Chev Scottsdale 20 4x4, 1972 Chev Custom 10 4x4 Long Stepside, 1965 Chev C60 Single Axle, as is w/Bed & Lift, 1958 Chev Viking, Single Axle w/Bed & Lift, 2006 Saturn Vue 4-Door, Truck Grill Guard & Headache Rack, **TRACTOR as is:** Allis 7060 3pt Duals, (2) Farmall M, Oliver 285-6239 No 3pt, 540 PTO, Frt Loader, Lot Tractor Frt Wts, **SHOP:** 2 Tire Balancers, Buffalo Bench Grinder, Generac Briggs & Stratton 16HP Portable Generator, Cutting torch w/Cart, Air Tank, 2 Pressure Washers, Lot Creepers, Small Toolbox, Shelf Full of Misc. Tools, Shop Bench Full of Tools, Bolt Bin, 6" Vise, (3) Rows of Tar Paper



From ELKHART, KS:
17 mi S on Hwy 95,
1/2 W on Hwy 64,
S SIDE

TED FIELDS ESTATE & OTHERS

PERSONAL REPRESENTATIVE: SARAH FIELDS - 580-461-1992

SAT - JULY 18 - 9 AM

From GUYMON, OK: 29 mi
NW on Hwy 64, S Side
From BOISE CITY, OK: 33
mi E on Hwy 64, S Side



MOTORCYCLES & REC

Tri Magnum w/Motorcycle Frame
DOHC Motorcycle as is
1984 Honda Shadow
Polaris Indy Trail Touring
3-WHL Trike w/Motor
City Bug Scooter, Runs
Craftsman Snow Blower
Unicycle, Aluminum 4-whl Ramp, 3 Sets
92) New Bicycles in Boxes
Pinto Moped
1988 Sea Ray V Hull 17' Boat, Inboard
Outboard, Very Clean
Motorcycle Camping Trailer & Cargo, Very Nice
B&F Specialties Inc. Bunkhouse, Like New
(2) Small Fishing Boats
Suzuki Boat Motor, Small Boat Motor
Vehicle Tow Hitch
Lot Camping Equipment
Old Saddles
Kodiak 4x4 400 w/Frt Snow Blade
Kawasaki Bayou
Parts Motorcycle
(5) Bicycles
Backyard Pond Kit

SHOP

Rockwell Saw Horse
Motor Stand
Cherry Picker
6-Drawer Upper Craftsman Tool Box w/5
Drawer Rollaway on Bottom, full of tools
Small Bench Grinder
Bench Drill Press
Protech Chop Saw
Lots of Tools, too many to list
Small Part Washer
AC 225 Amp Lincoln Welder

Washtub w/Ringer on top
Excell 2500 lb Pressure Washer

CARS and TRUCKS

1973 Saab, needs restored
1957 Ford Fairlane 500 2-Door Retractable
Hardtop, been restored, 16867 miles on
OH, Very Clean
1960 Triumph, needs restored
Car Dolly

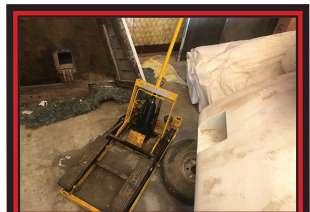
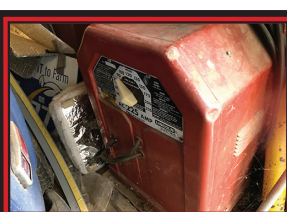
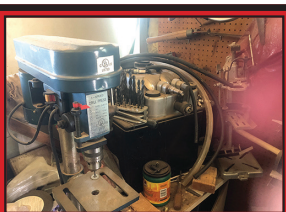
Tractor Supply 16' Car Trailer, Very Nice
1957 Chevrolet 6500 Single Axle w/Bed & Lift

TRACTOR & EQUIPMENT

JD 3020 w/3pt 540 & 1000 PTO w/Egging Cab
6' Bush Hog Mower
Howell 6' 3pt Back Blade
3' Round Steel Roller
6' Round Steel Roller

YARD

Murray 22" Push Mower
Yardman 7 HP Push Mower
(3) New 23x8.00-12 Tires,
Plow Horse Rototillers,
(3) Weed eaters
Compost Mixer
Cast Iron Bathtub



SAT. JULY 18, 2020 - 9AM - TED FIELDS & OTHERS



(43) Presidential Knife Collection from George Washington to George Bush, Very Nice



Portable Fireplace w/Upper Bar - bar open in right picture.



Collectible Gilley's Beer, Dudley Sports Signed Softball



Globe on Stand

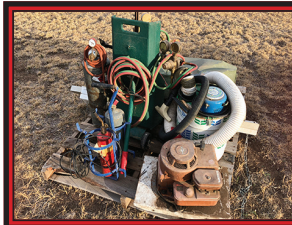


HOUSEHOLD

Pool Table 7'5" w/ESPN on side, Very Nice
Globe on Stand
Lot Collectibles, some Music Boxes
(43) President Knife Collection from George Washington to George Bush, Very Nice
(2) Big Area Rugs 6'x8'
Video Chair, Valet Chair, Office Chair
Weslo Treadmill
Lot Brief Cases
Portable Fireplace w/Upper Bar
Wall Clock w/Airplane on it
Collectible Gilley's Beer, Dudley Sports Signed Softball

TRAD Slot Machines
2-Door Cabinet full of stuff
Set Speakers
Set Golf Clubs
Bullhorns
4' Roll-top Desk
2-Drawer File Cabinet
Sears Sewing Machine
60's Singer Portable Sewing Machine
Stereo Cabinet
Lot Misc XM Radio, GPS, Lot Games
Frigidaire Stove, Electric'

MANY OTHER ITEMS TOO NUMEROUS TO MENTION



LUNCH
SERVED

Auctioneer
TERRY SHORES
License #10092

SHORES

AUCTION SERVICE

Route 1 Box 81H
Goodwell, OK 73939
(580) 349-2455 Cell (806) 339-3490

Visit us at www.globalauctionguide.com or www.shoresauction.com

Contact: Terry Shores - 806-339-3490 Dennis Sparkman - 405-274-4689 Sarah Fields - 580-461-1992

TERMS

Cash or check with proper I.D. day of sale. Settlement must be made day of sale. All descriptions of items are believed to be correct, but are in no way a warranty or guarantee. All items sold "As is, Where is" on personal inspection of the purchaser. All announcements made Sale Day are final and have priority. We are not responsible in case of accidents or theft of any item. Buyer will have 1 month to remove items.