

# Auction

**SATURDAY  
SEPT. 19th  
9AM 2020**

**TRACTOR & CONST.  
SHOP & FARM EQUIP.**

**TRUCKS & TRAILERS  
GUNS & PIPE YARD**

**LOCATION:** From Texhoma, OK: E 1½ mi on 95 Hwy to Hwy 1290, 10 mi S, on East Side  
From Stratord, TX: 20 mi E on Hwy 15 to Hwy 1290 and 1½ mi N, on East Side  
From Gruver, TX: 20 mi W on Hwy 15 to Hwy 1290 and 1½ mi N, on East Side

## WALLY BRIDWELL and OTHERS



1993 CAT 936 w/Bucket, Pallet Forks, SN8AJ0126 936F, 3576 Hrs, Very Clean



CAT V80E Forklift, 6000 lb 499A Type G



1985 CAT 140G Rd Grader, SN7V08772, 140G, 5900 Hrs, Very Clean



2012 L230 NH Skid Loader Like New, 366 hrs w/ Bucket & Pallet Fork, JA409230LCM449860, Hyd Post Hole Digger



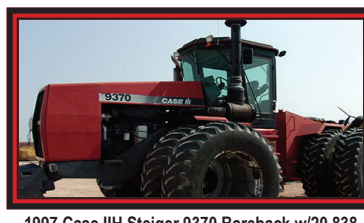
1992 JD 2355 w/16.9x30, 2 Hyd 540 PTO, Roll Bar, SNG753901



1982 JD 4640 w/New 520/8R38, PS, QH, 1000 PTO, 3 Hyd, 5349 Hrs, SN030418RW



1980 JD 4640 3Hyd, QH, PS, 1000 PTO, 1158+ Hrs, SN1158 w/JD 280 QA Loader w/Grapple Bkt



1997 Case IH Steiger 9370 Bareback w/20,838 Duals, 4 valves, PS, 8158 Hrs, SNJEE0068253



2007 PJ 30' w/Low Profile, Tilt Bed, Like New



2013 PJ Dual Tandem 35' w/Hyd Dove Tail, Like New



Big Tex 18' Car Trailer w/8 Bolt Axle, Fold HD Ramps



2002 Wilson Super Star Aluminum 6x8x30', SNH523379 Like New



2013 Chevy 3500 Duramax 6.6 HD w/12' Flatbed, Hyd Winch & POlls, 4x4 Dually, 16443 actual mi, Like New



1988 Ford F350 Dually Super Duty w/Like New Norte Flatbed, 90,024 mi



Kearney & Trecker Milwaukee 410 S-15 Milling machine, SN9/9564, Very Clean



Clausing-Colchester 17' Lathe w/Attachments, Like New

**Auctioneer  
TERRY SHORES  
License #10092**

**SHORES**

**Route 1 Box 81H  
Goodwell, OK 73939  
(580) 349-2455 Cell (806) 339-3490**

Visit us at [www.globalauctionguide.com](http://www.globalauctionguide.com) or [www.shoresauction.com](http://www.shoresauction.com)  
**Contact: Terry Shores - 806-339-3490**



**Auctioneer Note:** Wally has retired and has rented out his ground due to health reasons, and will offer the following equipment for sale. This is some of the most well taken care of equipment that I have ever had the opportunity to sell. Taxes will be charged unless the Buyer brings us a copy of their Texas Timber #.

## ITEMS PICTURED IN APPROXIMATE SALE ORDER. SALE STARTS AT 9:00 AM



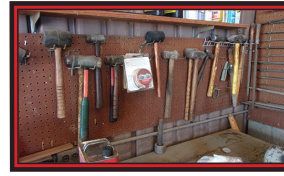
2 Sets of Threaders



Lot of 1/4" Sockets



Hyd Jacks, Pipe Wrenches, Bolt Cutters, 3'x10' Channel Iron Shop Table w/Dayton Grinder & Wilton 8" Vise



186 Steel Organizer Bins full of Bolts



Lot of Oxygen Acetylene Bottles



Floor To Ceiling Metal Shelves of Hyd. Hoses, Paint, Rubber Mats, Etc. (Shelves not included)



Wood Cabinet full of Gear Pullers and Porta Power



(2) Wood Bins (appx 100) full of Pipe Fittings, Grinder Whls, Hones, Caulking, (6) Drills, Air Nailers



Chatillon Scale



5 gal buckets of Rotella 15/40 Oil



18 Drawer Organizer w/Roll Pins, Etc.



Metal Cabinet with Drilling Bits



20 Ton Floor Jack



Lot Drill Bits and Taps



Lot Pipe Dies and Threading Equip.



Tap & Die Set



Hole Saws



Homemade Cherry Picker



Air Nailers



72 Metal Bins w/Asst Nails, Rivots, Etc.



Coll-Crimp 1 Model T -400 Hyd. Hose Machine w/Assorted Fittings & B&D Chop Saw



Metal Bin w/Hyd Hose Fittings, Asst. Sizes



(6) Roller Carts - different sizes



Lot of All Thread



Air Bumper Jack



Wood Bin full of Bolts



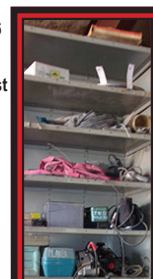
15'-25' Adj. Alum. Ladder



Rolls Hyd Hoses



Metal Bin 6 across, 12 down w/72 Bins of asst hydraulic fittings



Metal shelving full of: wood bits, drills, planers, routers bits, electric grinder, belt sanders, saw blades, saws, Black & Decker Mack & Napa Air tools, Ingersoll Rand, Metal Nibblers, Chop saw blades, air hammers, filters, U-Joints, crimpers

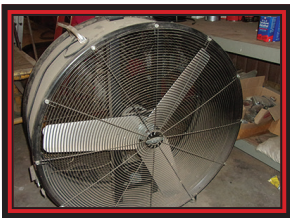
## ONLINE BIDDING ON SELECT ITEMS AVAILABLE through [equipmentfacts.com](http://equipmentfacts.com)

Go to [www.perkinsauctioneers.com](http://www.perkinsauctioneers.com) and click on the link to view the catalogue and bid.

**A 5% buyers premium will be charged on all online purchases only.**

Taxes will be charged unless the Buyer brings us a copy of their Texas Timber #.





4' Shop Fan



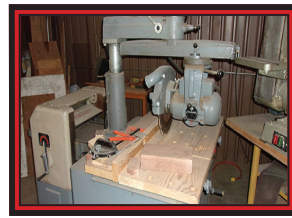
Wilton Band Saw, 14" Vertical, SN06062676



Rockwell 10" Unisaw, SN1L2889H Model 34-461



Dewalt Industrial Radial Arm Saw



Rockwell/Delta Radial Arm Saw, SNJ15835 Model 14-RAS



Jet Belt Sander-Grinder, Model SB-6x12



Wilton/Baldor Wheel Belt Grinder



Baldor Grinder-Buffer, #F689



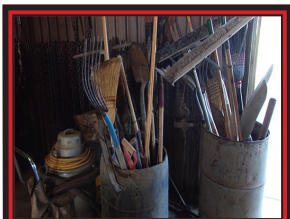
50 Ton Hyd Press



Hyd Jack Pipe Bender



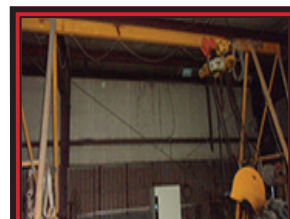
(2) Reddy Kerosene Shop Heaters, 115,000 BTU



Lot of Rakes, Brooms, etc.



Hotsy High Pressure Steam Cleaner



Overhead Hoist Frame, will sell Electric Hoist Separate



Better Built Tool Box, Job Box



Multi-Power 6 1/2 HP 2" Water Pump



Marvel Mfg Series 8 Mark II Upright Metal Ban Saw, w/variable Speed Feed



Furnas Everett Ind. Metal Chop Saw w/20" Blades, SN7022-3



Variable Speed HYD-MECH S-20 Series II Metal Band Saw



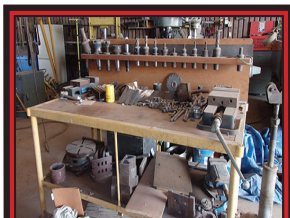
Pipe Roller Stand



Wells Index Milling Machine, Serial #22267, Model 847



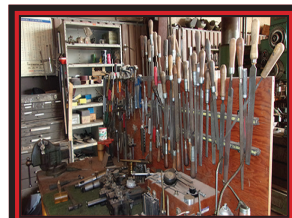
Kearney & Trecker Milwaukee 410 S-15 Milling machine, SN9/9564



Metal Shop Bench w/Vise and lathe tooling



Clausing-Colchester 17" w/Attachments



Lot of Files, Mallets, Hammers, Wood Clamps, etc



Summit 6/14/5 drill press SN595 Model 6/



Appx 50 Drill Bits - 1/2" - 1 1/2" w/Morse Taper Shank



Black Siamond Wheel Grinder SN12324



Metal Drill Bits, Clamps Grinder, Air Drill



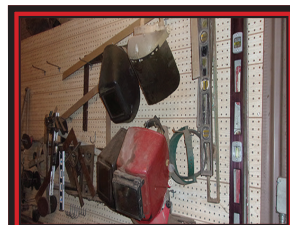
150 lb Anvil



(2) Oxy Acetylene Setups w/Torches Bottles



Bunch of Welding Rod



Welding and Cutting Helmets and Levels



Miller Wire Welder 1212



2" Thick 4' Round Metal Work Table





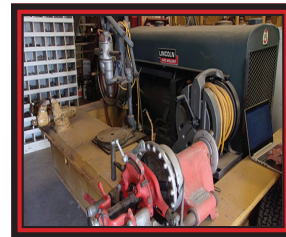
(10) Vise Grip Clamps  
(25+) C-Clamps



Plasma Cutter Victor Thermal



Walley Bridwell Shop Built 10' Welding Trailer w/Big 3 Lincoln Arc Welder, Ingersoll Rand T30 2 Stage air Compressor w/Kohler Motor, Cutting Torch, Pipe & regular Vice, Drill Press, Rigid Pipe Threader, Job Box full Welding Supplies. LIKE NEW



Horizontal 100 gal Air Compressor



Walley Bridwell built 9 Ft Welding Trailer w/Lincoln SA 200 Arc Welder, Cutting Torch, Lead Reels, Vice, Job Box full of Welding Supplies. LIKE NEW



Walley Bridwell Built 10' Trailer W/ 8 Bolt Axle, Generac Generator w/300 gal LP tank, Serial #861142, Model 8956-0, Volts 120/240, Amps 208/104 25KW



3 Cyl Diesel Generator 12KW



JD 140 w/Rototiller and Mower Deck, Runs Great



Craftsman DYT 4000 Law Mower



Ditch Witch 2300 SN302404 Good Shape



1992 JD 2355 w/16.9x30, 2 Hyd 540 PTO, Roll Bar, SNG753901



Cat 3 Quick Hitch



Deutz Diesel Alkta Steam Cleaner w/500 gal tank on Tandem axle trailer



Super Star Wilson, 2002 Aluminum 6x8x30 ft, SNH523379 LIKE NEW



1972 Merritt 40' Pot



JD 3010 Std 16.9x34 540 PTO & JD 48 Loader



JD 4020 Diesel w/Good 18.4x34 w/540 & 1000 PTO Dual Hyd., 3pt, Show 6350 Hrs, St. Shift w/JD 158 Loader SNT213R15914R



2013 PJ Gooseneck Duel Tandem 35 ft., w/hydro Dove Tail. LIKE NEW



2007 PJ gooseneck 30 ft w/low profile, tilt bed. LIKE NEW



Big Tex, 18 ft Car Trailer w/8 bolt axle, fold HD Ramps



GOOSENECK Trailer, 6x8x24 ft w/ steel grated floor



Carrie Trailer, 16 ft Bumper Pull w/ steel grated floor



Carrie Trailer, 33 ft flat bed w/Duals & Ramps, SNCT-0178



2 Whl Pickup Bed Trailer



10' Stock Trailer



1975 Chevy C60 w/Bed & Lift



2008 Ford F350 4x4 Gas Auto w/ Brimco Flat Spike Bed



1948 International w/Bed



1980 Chevy #10 Custom Deluxe Auto 6cyl 59,580 mi



1969 Ford 250 Custom Cab Utility Box



2002 Jaguar 4dr V8 402 145,500 mi



Volkswagon Bug Body



# TRACTORS, LOADERS & EQUIP STARTS SELLING BETWEEN 1 & 2 pm



JD 680 45' Chisel w/sweeps & tines



Krause 7/5 Sweep w/Tines



Sunflower 5/5 Sweep w/wts.



2 Big G 35' Disc Double Offset



JD 40' Chisel



2 JD 3pt 520 Grain Drills



JD 400 27ft Rotary Hoe



JD Springtooth Harrow



Rhino SM72 Hyd Shredder Fit Skidloader, Like New



JD 7ft 3 pt Shredder



Homemade 3 pt Bale Fork



Rhino Flex 20ft Shredder



2 - Homemade Rd Bale Feeders



1000 gal Water Tank



Wylie Drag Sprayer w/50 ft Boom



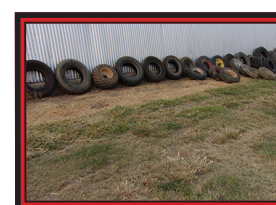
Big Red Cement Mixer SN85018, 3pt



Fertilizer Spreader made in Italy, 3pt, Like New



9 Shank Straight Ripper



Lot of Good Used Tires



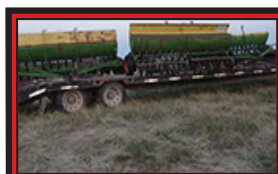
Trailer Load of Filters and Miscellaneous



Set of 6 JD Drills Set of 3 JD Drills w/rubber tires, Hoe



2 Sets of 4 Krause 824 Oneways w/Hydraulics



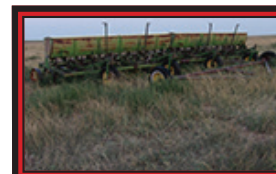
(3) JD Disk Drills 1610 w/Hitch



(2) JD Hoe Drills



(2) JD Hoe Drills



(2) JD Hoe Drills



(2) JD Hoe Drills for Parts



JD 36 ft Spring Tooth Harrow



JD 680 45 ft Chisel w/sweeps & tines



3pt Krause Chisel



Sunflower 55 Sweep w/ Wts.



30' JD 400 Rotary Hoe

## WILL SELL MISC PALLET EQUIPMENT IN 2ND RING



Cat Clutch Prts



Cat Clutch Parts



Cat Parts Motor



(5) Gear Heads



Lot Implement Rims



# PIPE WILL START SELLING BETWEEN 3 & 4 PM - Located in NE Corner of Home Quarter



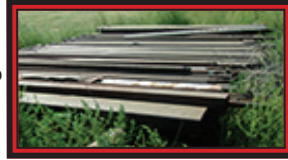
## MISC EQUIP IN WOOD SHED

Bins full of Drill Parts  
Lot Fuel Jugs  
Lot Tire Chains  
Cat Teeth for Pay Loader Bucket  
Lot Hoses  
Lot New Quikrete  
Grease & Barrel Pumps  
Barrel Trolley  
Lot Barrels of Oil  
Wood Bolt Bin  
(2) New 14.00x24 12 Ply Road  
Grader Tires  
(11) Pallets of Big Motor Cat Parts  
(3) Re-built 353 Heads, Cat  
Lot Elec Panels  
& Motor  
(2) Whl Pipe Bends  
Briggs & Stratton Elec Start Motor  
Lot HD Chain  
Lot Screw Tie Downs  
Lot Krause Plow Parts  
(2) Regulators  
Rod Weeder Gear Box & Infrared  
Heater  
(2) Sets of Lundell Tractor Window  
Blinds  
Lot Elect Motors  
(2) Fender Tool Boxes & Small Tires  
Lot Square D Elect. Boxes  
Lot Tarps  
Lot Pilar Block Bearings & Grinder  
Whls  
Pallet of PTO Hyd Pump Lath Chuck  
Lot Tire Chains  
Barrel w/Stand, 55 Gal Hydrotex  
Gear Head  
Lot Old Style Barrel Pumps  
Lot Steel Whls & Tires  
Hand Sprayer w/Gas Pump  
Lot Tin Closers  
Small Water cooler & Transmission  
Lot Grease Guns  
Old Bench Vise

(7) Gear Heads  
Hyd Drill Fill Auger  
(4) Saw Horses  
Tarp w/Poles  
3- Gal Fuel Tank  
5 HP Elect Motor  
Big H Duty 7" Vise  
LA Products 710  
Lot Springs For Trampoline

## IRON YARD

(8) Joints of 5" Pipe 40' to 45'  
Long  
(1) Joint of 4 1/2" Drill Stem 1/2"  
Thick, New  
25' of 3/2" Pipe  
(2) Sticks of 2"x2" Square  
Tubing 45' Long  
(1) Stick 4"x2" Rectangle  
Tubing 20 Long  
(1) Stick 6" Pipe 20' Long  
(2) Sticks of I-Beam 23'6" x  
11"  
(8) Joints 4 1/2" Drill Stem 33'  
Long  
(2) 18"x6" Angle Iron  
App 200 Sticks of Sucker Rod  
1/2", 3/4", 1"  
(18) Joints of 2 7/8 Tubing 30'  
Long, Like New  
(32) Joints of 2 7/8 Tubing 31'  
Long, Very Good  
(1) Joint of 2 7/8 Tubing 30'  
Long, Used  
(16) Joints of 2 7/8 Drill Stem,  
30' Long  
(3) Joints of 2 7/8 Water Pump  
Pipe  
(46) Joints of 1 1/2" x 32" Long  
Pipe  
(1) Joint of Pipe 5" x 20'  
(1) Joint of Pipe 40" x 8"  
(9) Joints 2 3/8 x 32" Drill Stem  
(2) Joints 2 7/8 x 30' Tubing  
2 1/2 x 2 1/2 Solid Bar 20' Long  
(5) Joints of 6" Column Pipe  
18' to 20'  
(3) Railroad Irons 33'6" 15'  
(2) 41' & 24' 3"x3" Angle Iron  
3/8 Thick  
(1) 2"x3" Angle Iron  
(1) 6" Pipe 45' Bent  
(1) 40' Used Culvert 24"  
App 150 Sticks 5/8" Sucker Rod  
26' Long  
(3) Joints 6" Drill Stem 25' Long  
(10) Sticks 1" Pipe 30'  
(6) Sticks 1 1/2" Pipe 31'  
(8) Joints 3 1/2" Drill Stem 30'  
(20) Joints of 4" Pipe from 10' to  
41' Long  
(1) Short Pipe Rack 41' Long  
(2) 24" Pipe 34' Long  
(17) High L in Poles  
(3) 1" Pipe 20'  
(4) 2 7/8 Well Pipe 20'  
(18) Sticks of Threaded Pully  
Pipe  
(2) Railroad Iron 30" Long  
(2) Railroad Iron 13' and 16'  
(14) 2 7/8 Wate4 Pump Tubing  
w/Shaft 20'  
(1) 8"x8" I-Beam 20'  
(10) Sets of Pipe Stands App  
30' Wide  
(110) pump Shaft 10'x1 1/2"  
(2) 10"x6" Column Pipe  
(1) 12'x6" Rectangle Tubing  
3"x8"  
(1) 12' 4x4 Square Tubing  
Lot Fuel Tank Stands  
App 6000 Gal Steel Tank  
(45) Joints of 8" Column Pipe,  
pretty rusty  
Lot Gate Frames and Hay  
Feeders



## GUNS SELL AT 12:00 NOON



Winchester Model 63 Automatic  
SN1465258

Winchester F773 900 9422  
Mag

Spencer Carbine



Brownie 22 Mag BP SN32224RR176 w/  
Leupold Scope, Excellent Condition  
Marlin 22 1897 SN18970054 New, In Box

22 Winchester Pumps  
Model 61 SN1087  
Model 67 SN2100024  
Model 62A SN386639

Savage 29B Pump SN NA  
Remington 121 Pump SN13446



**Lunch Will  
Be Served**

**Auctioneer  
TERRY SHORES  
License #10092**

**SHORES**  
**AUCTION SERVICE**

**MANY OTHER ITEMS TOO NUMEROUS  
TO MENTION**

**Route 1 Box 81H  
Goodwell, OK 73939  
(580) 349-2455 Cell (806) 339-3490**

**Visit us at [www.globalauctionguide.com](http://www.globalauctionguide.com) or [www.shoresauction.com](http://www.shoresauction.com)**

**Contact: Terry Shores - 806-339-3490 or 580-349-2455**

### TERMS

Cash or check with proper I.D. day of sale. Settlement must be made day of sale. All descriptions of items are believed to be correct, but are in no way a warranty or guarantee. All items sold "As is, Where is" on personal inspection of the purchaser. All announcements made Sale Day are final and have priority. We are not responsible in case of accidents or theft of any item. Buyer will have 1 month to remove items.