

STORM DATE

Tues. Mar.
30th

TRACTORS & COMBINES
TRUCKS & PICKUPS

Auctions

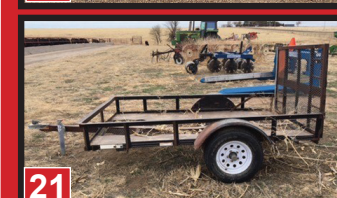
SATURDAY
MAR. 27th
10 am 2021

IRR. - FARM EQUIP.
TRAILERS - CATTLE EQUIP

LOCATION:

From GUYMON, OK 13 MI S on 136 Hwy to RD ii 1 mi W to State Line or FM 1262, 1 mi S to CO RD B 8600
From GRUVER, TX 6 MI W on Hwy 15, to FM 1262, 15 miles N to CO RD B, 8600

ROBERT SCHIBLER, JP TEBEEST & OTHERS



VEHICLES AND TRUCKS

- (1) 1981 Freightliner, CAT motor, 3406 13 speed, bad injector.
- (2) 2005 Freightliner, 60 series Detroit, 10 speed, 2957/75/R225, Lots of miles
- (3) 1974 KW runs great
- (4) 1973 Chevy C60 grain truck, 366 ENG, 20' dump bed, new carb, 70,620 miles.
- (5) 1979 GMC 7000, 366 engine, hyd auger, new carb, 22' dump bed, 78,210 miles.
- (6) 1970 Ford 600 grain truck, 18' box w/ 12v auger, 56,090 miles, very clean
- (7) 1979 Chevy C70 with 2000 Fuel Tank
- (8) 1972 GMC 366 engine, shop made dump bed, OD stopped working.
- (9) MACK with 3000 gal Water tank, Runs
- (10) 07 Chevy ¾ ton 4x4 crew cab, flat bed, 175,000 miles
- (11) 1981 Chevy 20 Scottsdale ¾ ton, 6.2 diesel, bad fuel injector pump
- (12) 1999 Ford F250, 4x4, 7.3 power stroke, 250,610 miles, runs great

TRACTORS

- (29) 1991 Case 7140 Magnum, 3pt, PTO, roughly 8000hrs, very clean, with temble steering
- (30) 1981 JD 4840, PS, PTO, 3pt, 7913hrs, very clean
- (31) 1981 International IH 1480 Combine, runs
- (32) JD 8640, 9332hrs, New engine less then 500 hrs, w/ blade
- (33) 1973 Ford 3000 runs but needs work.

EQUIPMENT

- (13) JD flail shredder
- (14) JD 7000 12 row 30" planter w/ tanks w/ monitor
- JD 32 row 8" hoe drill, set
- 5- Krause K223 one ways
- JD hoe drill
- 4- V Blade ditchers
- 3- Dimster drills
- 16' chisel

- 20' cultivator
- JD 16' disc drill
- 30' drag
- Krause 20' chisel w/ spike drag
- Krause 20' chisel
- 3pt 13 shank tool bar
- 3pt 24' drum roller
- 3pt row crop trencher 5 shank
- 3pt row crop trencher 6 shank
- JD 400 rotary hoe
- Big 12 400 bushel grain cart
- Big 12 600 bushel grain cart
- (22) 2013 follow master 49' sweep plow, 26" sweeps w/ pickers, like new, used only approx. 5000 acres.

- (15) Crust Buster 24' disk
- (16) JD 40' Chisel, wing fold, w/ pickers
- (17) Sunflower 27' wing fold disc
- (18) 30' chisel 5 shank
- (19) Hesston BP20 bale feeder

- Seed cleaner
- 36' spring tool
- JD 12' land plain
- (20) Follow Master Quinstar 35' sweep plow w/ pickers
- (34) 3pt adjustable blade
- 49' Follow Master sweep

- (35) Homemade 8' Road Boss CAT III
- FlexKing KM5x5' Sweep No Pickers
- 30' Tie Drill, Box damaged

TANKS

- 500 Gal portable fuel tank
- 2- 1000 gal fuel tanks w/ stands
- 3- 500 gal fuel tanks
- 500 gal Anhydrous tank
- 1000 gal LP tank
- 500 gal LP tank
- 2- 500 gal fuel tanks w/stands
- Set of 200 gal saddle tanks

MISC

- 150- ½" Rebar fence post
- (37) 24 pieces of guard rail

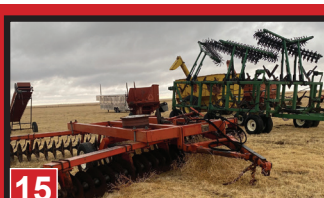
- 2- 100 gal LP tanks
- 28-rolls of barbed wire
- Lots of 1" pipe various lengths
- Several feet of 4' chain-link fencing
- 2- 4" grain augers
- Lots of extra chisels, disks, and shanks

TRAILERS

- (37) 2- Donahue equipment trailers
- (21) 8' 4 wheeler trailer
- (23) Tandem Axel Gooseneck Stock Trailer
- (24) 2002 Wilson 8'x32' Aluminum Stock Trailer, Tandem Single Wheel
- (25) 1980 Timpse super hopper grain trailer
- 4- pipe trailers
- (26) 48' floor trailer
- (27) 1979 Merritt Cattle trailer 96"wide, 48' long
- (28) 1991 Merritt Gold Line 96" wide, 48' long
- (38) Tanker Trailer

IRRIGATION

- Lots of 8" plastic sprinkler pipe
 - Lots of 8" aluminum sprinkler pipe
 - Lots of 8" aluminum pipe fittings and valves
 - (22b) 8" aluminum gated pipe
 - 5 irrigation motors, needs work as is
- ### CATTLE EQUIPMENT
- (36) 10- Texas Best cattle panels, 5x10'
 - 10- various sizes round stock tanks
 - Several deep belly feed troughs
 - 20x6', and 15'x8' Cattle guard
 - 12x3' deep belly trough
 - Cattle squeeze chute



TERMS Cash or check with proper I.D. day of sale. Settlement must be made day of sale. All descriptions of items are believed to be correct, but are in no way a warranty or guarantee. All items sold "As is, Where is" on personal inspection of the purchaser. All announcements made Sale Day are final and have priority. We are not responsible in case of accidents or theft. Buyer will have one month to remove items.

LUNCH SERVED

Auctioneer
TERRY SHORES
License #10092

SHORES

NUMEROUS OTHER ITEMS TOO MANY TO MENTION

Route 1 Box 81H
Goodwell, OK 73939
580-349-2455
Cell (806) 339-3490

Visit us at www.globalauctionguide.com or www.shoresauction.com
For Further Info: TERRY SHORES - 806-339-3490 ROBERT SCHIBLER - 870-904-5706 JP TEBEEST - 806-736-2422