

# Auction

STORM DATE  
Tues. Mar. 23rd

**SATURDAY  
MAR. 20th  
9AM 2021**

**TRACTOR & COMBINE  
SHOP & FARM EQUIP.**

**TRUCKS & TRAILERS  
HALF MI. SPRINKLER  
HORSE BARN & FENCING**

## LOCATION:

From Elkhart KS: 6 Miles South on HWY 95 to county road 7, 1 mi East

From Junction Hwy 64, and 95 Hwy South of Elkhart: N 10 mi to county road 7, 1 mile East

## WHISENNAND BROTHERS AND OTHERS



1987 Case IH 9130 4x4 with 3pt and PTO  
13,663 hours, PS, 18.4x38 duals, runs good



2/ IHC 4586, w/20, 8/38 duals, 3pt, no PTO,  
not running



1998 Case International, 7140 FWA, 3pt, PTO,  
18.4/42, Good tires, 14429 hrs, runs good



1997 Case IH 8940, 3pt, PTO, FWA, 28.8/38,  
11450 hrs runs good



JM Grain Cart 500-14 model



DMI ECO-Tiger 530B 5 shank ripper, very  
clean



Quinstar Followmaster 36' Sweep with Pickers,  
Clean



2005 Case International 2388, with 1010 30' header,  
feeder house completely overhauled, 2218 seo  
hrs, has field tracker,



JD 6 bottom Moldboard on land, clean



JD 965 On land, swing Moldboard, Very  
clean



2 JD 1600 41' chisels



Flex King KM9x6' Sweep Plow with  
Pickers



1996 Reinke 1/2 MI Sprinkler, 14315 hours on second panel box, 38" rubber tires, with  
towable pivot, in good shape to be sold at 2:00 pm



76'x15' barn, 3 horse stalls 10'x15', hay stall 15'x15', feed/tack compartment 15'x15'  
to be moved. Will sell after 2:00 pm

Auctioneer  
**TERRY SHORES**  
License #10092

**SHORES**  
AUCTION SERVICE

Route 1 Box 81H  
Goodwell, OK 73939  
(580) 349-2455 Cell (806) 339-3490

Visit us at [www.globalauctionguide.com](http://www.globalauctionguide.com) or [www.shoresauction.com](http://www.shoresauction.com)

Contact: Terry Shores - 806-339-3490 Jon Whisennand - 580-520-1264 Blake Shores - 405-312-1796  
Todd Whisennand - 620-360-0246





2 1972 IHC 1066 , not running



IHC 2388, burnt on left side , no tires, motor not burnt, lots of good parts



Sunflower Followmaster w/ pickers 30'



Ford 9N, not running



Front and Rear Duals, for 8940



8M Ford with Bucket, not running



Hahn Boy Sprayer Coupe, as is



3pt back boom, and combine duals



45' Crust buster chisel, needs hoses



Farris Wilkens 400 bushel grain cart



JD 12 Row 20' corn head, with plastic snouts



Richardson 75 sweep, needs repairs



Richardson 75 with no pickers



Homemade 20' corn saver 12 row



Krause 21' chisel



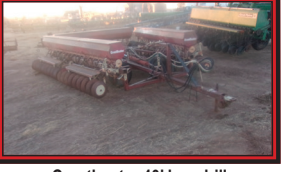
Krause 21' chisel



Sunflower, 32', 8" spacing, double offset



Case International 45' crumbler



Crustbuster 40' hoe drill



Hamby 3bar tool bar, with fertilizer shanks



3 Case IH 30' Headers, 2-10/10, 1-10/20 Flex



Hough H-65C Hay loader, runs but no reverse, Perkins diesel motor



Great Plains 24' solid stand, DBL Disc Drill



Homemade Float, 14' wide with transport



New Holland Round Baler



2 IHC 12 Row 40" Lister Planters



2000 Water Tank



Holcomb 14' Land Plain



Blue Jet land walk fertilizer applicator



Steel bed Container, Full of Scrap Iron



Homemade 20' wide, land float



Sunflower 36' disc for parts



Sisco Grain Dryer



2 IHC 5/10 Drills with hitch



100lb anvil



Parts washing machine



Miller 250 Wire Welder



Lincoln Idlelark 240Volts



Sanborn Upright Air Compressor



Honda Water Pumps, with motors as is



Old Welder, as is



TowMotor Forklift, might run



Cherry Picker Engine Lift



Generator as is



Yamaha 90 Dirt Bike



Slide in Camper



504 M&M motor, 605 Motor as is



Amarillo Gearheads



330 Magnum 4 Wheeler, w/shaft ride system



6" 40 row knife sled



12 rows of knife sleds



3 Bar Toolbar



IHC 6 row bedder



Pile of Markers



Toolbar with fertilizer shanks



5 Krause One ways



12 Row 40" Folded knife sled



12 Row 40" double shanks w/ sweeps



Drag Type Planter



Overhead Hoist



Hamby Chisel



One Row Corn Binder



Tumblebug



Antique Planter



Toolbar with inwise transport



V ditcher



Littleton Cultivator, 6 row 40"



(2) JD 7300 Planters, 12 row



JD 3pt backblade



Leon 3pt 8' hydraulic backblade



Bush hog, 13', 3pt shredder



Tucker Speedmover box blade



Miller 20' offset, DBL Bar, 18"



2 New 5x7 Toolbars with hitch



Case 3pt rotary hoe



IHC 6 row 40" lister



JD 3pt drill 20'



Great Plains, 30' drill DBL disc, clean



JD 400 30' rotary hoe



JD 400 20' rotary hoe



Tandem Axel Water Trailer



Wiley 500 gal sprayer w/ hyd pump, 60'



5000 Gal Tanker



Two Wheel Round Bale Trailer



Sudenga shuttle transfer cabby with motor and auger



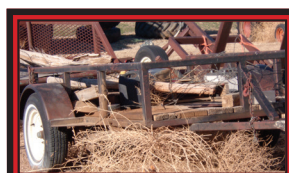
14' trailer, needs repairs



Homemade 2-wheel trailer with front ramp



16' utility trailer



2 Wheel Utility Trailer



Lot of Fuel Tanks



Pallet Jack



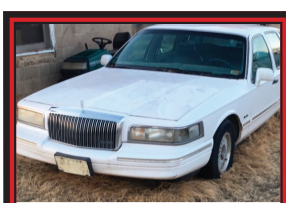
1000 gal Fuel Tank



2-500 gal fuel tanks



**1/2 MI Sprinkler will sell at 2:00 pm, Horse Barn and Cattle Equi. will sell thereafter**



#### **TANKS**

2-500 gal fuel tanks with stand  
1500 gal water tank

#### **MISC**

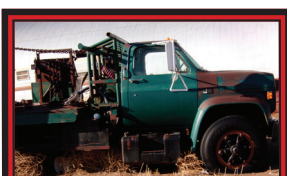
Pickup steel flatbed  
Truck frame w/ 14' bed  
Lots of scrap iron  
Lots of misc sweeps  
6 IHC front tractor weights  
Lots of 2x2" gas well panels 10' and 12' panels  
Lots of 2" pipe gas well panels  
Lots of misc pipe  
Gas well house  
Tack room 10x20'



Sanburn commercial air compressor 100 gal  
Lots offhand tools  
Delta drill press  
4x8' 1" thick welding table  
Table vise attached to drop hitch  
Tire machine  
2-grinders on stands  
Millermatic 250 wire welder  
Cutting torch w/ dolly  
Manmade pipe stands  
2 ton floor jack  
Makita chop saw  
Manmade saw hack  
Lots of scrap iron and pipe  
Lots of chain and boomers  
3 ton cherry picker  
Homemade Pottsgington Saddle, Amarillo Tx  
10x20' portable shed with restroom  
Portable tack shed 8x15'

#### **TRAILERS**

2-Tandem axel home made fuel trailer 500 gal  
2 wheel utility trailer frame 12'  
16' car hauler trailer 5 bolt wheels  
10' 2 wheel trailer  
5x16 catch trailer



#### **VEHICLES AND TRUCKS**

1974 Ford F150  
1988 F150 as is  
1889 F150 super cab, 4x4, long bed as is  
1960 F100 Ford as is  
1988 Ford F150 super cab, 4x4, long bed, as is  
1987 Ford F150 single cab lariat, 4x4 as is  
2-1960 Ford F600 custom cab, BL, single axel  
1968 KW day cab Semi  
1992 Ford F150 super cab, 4x4 as is  
1950 F6 w/ wood side bed  
1873 Ford F600, w/ dump bed  
1975 Chevy 2-ton winch truck  
1994 Chevy 1500 extended cab, 4x4, LP as is  
Mack FS700I Cab over w/ 20' bed and lift  
1970 Ford F250 4x4 with flatbed  
1993 Ford F250 cab and chassis 4x4  
1982 Kenworth cab over, Detroit  
1997 Lincoln  
1986 Chevy SA200 Lincoln Welder  
2007 Mega cab 4x4 6.7 Cummins 6spd auto Jake brake  
**EQUIPMENT**  
3 bar tool bar 30' w/ end ys transport  
4x4 30' tool bar  
295 6row flex planters  
2-bar diamond 3pt tool bar 18'  
7-shank tool bar ripper, w/ puddlers, damerdiker  
Spe-dee 3pt rotary hoe  
JD 20' 3pt double disk grain drill 7.5' spacing  
Hammi 30' chisel  
Lots of 4" and 6" augers

RozLift pallet jack  
Several manmade tables  
Several metal tables on rollers  
Lincoln 120v welder as is  
North star air compressor  
Hand crank pumps  
Lots of brand new filters  
2 hyd presses

#### **ANTIQUE EQUIPMENT**

4 row drag type planter  
Jeffers chisel frame  
1 row corn bundler  
K2 krause one way 12' 30' 6" auger with motor  
3pt sickle mower  
Tandem disk

#### **TRACTORS**

4586 for salvage

#### **CATTLE EQUIPMENT**

76x15' horse barn, w/3- 10x15' horse stalls wood lined, 2- 15x15' feed rooms, w/ 6' ally, and 15x30' steel pins w/ 4' gates.  
8' homemade round hay feeder. Approx. 15- 14' gates  
3- 4' walk through gates  
17- WW fence panels  
8- Farm master 10' cattle panels  
Several Feed troughs  
Squeeze chute  
Homemade 2-wheel wire enroller  
Lots of rebar post  
Lots of t-post  
Lots of 6" wood post  
Lots of smooth wire  
T corner anchor post  
Several round hay feeders  
**IRRIGATION**  
4- Chevy 454 1 New overhaul, 3 will run good



#### **UPCOMING SALES**

**ROBERT SCHIBLER- MARCH 27TH SOUTH OF GUYMON**  
**GARRY WRIGHT- APRIL 24TH FOUR CORNERS AREA**  
**ABIE HAMM - MAY 8TH ADAMS OK**

**MANY OTHER ITEMS TOO  
NUMEROUS  
TO MENTION**

**Lunch Will  
Be Served**

**Auctioneer  
TERRY SHORES  
License #10092**

**SHORES**  
**AUCTION SERVICE**

**Route 1 Box 81H  
Goodwell, OK 73939  
(580) 349-2455 Cell (806) 339-3490**

**Visit us at [www.globalauctionguide.com](http://www.globalauctionguide.com) or [www.shoresauction.com](http://www.shoresauction.com)**

**Contact: Terry Shores - 806-339-3490 Jon Whisennand - 580-520-1264 Blake Shores - 405-312-1796**  
**TERMS**

Cash or check with proper I.D. day of sale. Settlement must be made day of sale. All descriptions of items are believed to be correct, but are in no way a warranty or guarantee. All items sold "As is, Where is" on personal inspection of the purchaser. All announcements made Sale Day are final and have priority. We are not responsible in case of accidents or theft of any item. Buyer will have 1 month to remove items.