

Auction

2 DIFFERENT SALES

**TRACTORS & FARM EQUIP
TRUCKS & PICKUPS**

**SHOP EQUIP & TRAILERS
HAY & CATTLE EQUIP**



**AREA FARMERS MAY 15TH, 2021 - 2 PM
LOCATION LIBERAL KS, 4 1/2 MILES S ON 83 HWY
TURPIN 12 1/2 MILES N ON 83 HWY**



1979 JD 4640 QR 20.8 x 38 duals, 1000 PTO, APPRX 9000 hrs, very clean



2012 New Holland, T6050, FWA, Auto PS, 2760 hrs, 540 PTO, W/840TL Loader w/ bale fork



1988 Case IHC 9150, new tires, PS, CAT 3306B, new interior, 4 valves, less than 8,000 hours



CASE 585E 4X4 Forklift; 4300 hrs; 6,000 lb; 21' lift; very good condition VIN 8454



Orthman Strip Tiller 12 Row 30', very clean



JD 455 35' grain drill, 7 1/2" spacing, very clean



2012 New Holland Baler BR7090, specialty crop, net wrap, very clean



New Holland 316 rotary disc, MowMax II, Hydro Swing 16', very clean



2009 Great Plains 60' air planter, 24 row 30' twin, very clean



JD 1895 No Till air seeder, 45' w/1910 cart, very clean

**MAY 22ND, 2021 - 10 AM
TERRY AND SUSAN KYLE & OTHERS
LOCATION BEAVER, OK, 6 1/2 MILES W ON CC RD 14**



2015 JD 5085E, 540 PTO, QH, w/H240 QA loader, QA bucket, hay fork, 1288 hrs, very clean



JD MX10 3pt, 10' shredder, used very little



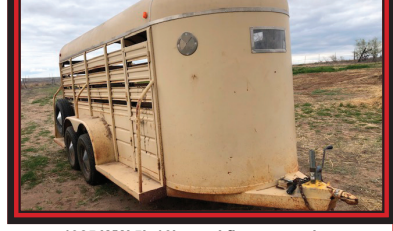
2010 Ford F-350 XL, single wheel, 4x4 super duty, 5.8 Triton v10, w/butler welding bale bed, Grizzly 1200LB cake box and auger, 127,889 miles, very clean



1997 Ford F-350 XL, 5 spd, 2 whl drive, w/ 12' steel flat bed dually, 142,898 miles



1992 Diamond D 16'x18' full top, good floor



1985 WW 5'x16', good floor, very clean



2 Hay Trailers



16' Car Hauler Trailer 5 Bolt Wheels

**Auctioneer
TERRY SHORES
License #10092**

SHORES

**Route 1 Box 81H
Goodwell, OK 73939
(580) 349-2455 Cell (806) 339-3490**

Visit us at www.globalauctionguide.com or www.shoresauction.com
Contact: Terry Shores - 806-339-3490 OR 580-349-2455 Blake Shores - 405-312-1796 Randy Schriener - 580-521-1671

AREA FARMERS MAY 15TH, 2 PM
LOCATION LIBERAL KS, 4 1/2 MILES S ON E SIDE OF 83 HWY
TURPIN 12 1/2 MILES N ON E SIDE OF 83 HWY



11
McFarland, 50' peg harrow, used very little



12
5'x5' Sunflower sweep



13
Sunflower disc 1433, 9" spacing, 32', disc measuring 23 1/2"



14
Rhino 15' Flexwing shredder, been shedded, very clean



15
Rhino 1310 3pt shredder, 1 bad gear box



16
Ficklinca 1500, 800 bushel grain cart



17
3-210 barrel, fiberglass tanks w/ lids



18
4-500 barrel fiberglass been cleaned out



19
Hoeme Chisel with HYD 14'



20
Fuel Trailer



21
2003 Ford F-350 XL, 5 speed, w/477 Deweze bale bed, 110,448 miles



22
2006 Ford F-350 XLT Super Duty, AUTO, V8 PS, super cab, 4x4, w/482 deweze, 184,106



23
2001 Ford F-350 XLT Super Duty, 5 sp, 4x4, w/482 deweze bale bed, 159,522



24
2017 Dodge Ram 3500 diesel, 4x4, 4 door, 112,742 miles, very clean, Vin1128



25
2005 F-250 w/ 6.0 bad engine, auto, 4x4, 4 door, lot of miles



26
2009 Freightliner Cascadia, 10 speed, 900,000+ m, 60 series detroit



27
2007 KW W900L, 565 ISX CUM, 18 Speed, 3 Pedal Autospeed



28
1992 Freightliner, 60 series detroit, 9 SP, 627, 004 miles, good tires, 2012 General Service 41' trailer, like new



29
1981 IHC 4300, 9 speed trans, runs good



30
1999 Freightliner, Classic XL, 500 detroit, 13 speed, runs good



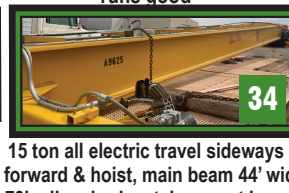
31
1972 Chevy C50 Single Axel, 14' bed and lift, 53605miles



32
2005 ww 30' x 6' 8", triple axle, full top, need floor



33
2007 Trail-eze, TE70H145 HYD SYS mounted on trailer, w/ dovetail & winch, used very little, very clean



34
15 ton all electric travel sideways & forward & hoist, main beam 44' wide 73' rail on horizontal support beams



35
14' stock trailer, as is

ONLINE BIDDING ON SELECT ITEMS AVAILABLE AT equipmentfacts.com

Go to rsb1671@gmail.com or call Randy Schreiner - 580-521-1671 or Blake Shores - 405-312-1796 and click on the link to view the catalogue and to pre-register.

FOR ONLINE BUYERS ONLY: A 10% buyers premium will be charged on all items under \$5000. 8% buyers premium items from \$5000 to \$10000. 6% buyers premium on items over \$10,000.

Taxes will be charged unless the Buyer brings us a copy of their Tax #.

TERMS: Cash or check with proper I.D. day of sale. Settlement must be made day of sale. All descriptions of items are believed to be correct, but are in no way a warranty or guarantee. All items sold "As is, Where is" on personal inspection of the purchaser. All announcements made Sale Day are final and have priority. We are not responsible in case of accidents or theft of any item. Buyer will have 1 month to remove items.

Auctioneer
TERRY SHORES
License #10092



Route 1 Box 81H
Goodwell, OK 73939
(580) 349-2455 Cell (806) 339-3490

Visit us at www.globalauctionguide.com or www.shoresauction.com

Contact: Terry Shores - 806-339-3490 OR 580-349-2455 Blake Shores - 405-312-1796 Randy Schreiner - 580-521-1671

(1) 1979 JD 4640 QR 20.8 x 38 duals, 1000 PTO, APPRX 9000 hrs, very clean

(2) 2012 New Holland, T6050, FWA, Auto PS, 2760 hrs, 540 PTO, W/840TL Loader w/ bale fork

(3) 1988 Case IHC 9150, new tires, PS, CAT 3306B, new interior, 4 valves, less than 8,000 hours, new uniballs, A/C blows cold, has been serviced & is field ready, very clean

(4) CASE 585E 4X4 Forklift; 4247 hrs; 6,000 lb; 21' lift; very good condition VIN 8454

(5) Orthman Strip Tiller 12 Row 30', very clean

(6) JD 455 35' grain drill, 7 1/2" spacing, very clean

(7) 2012 New Holland Baler BR7090, specialty crop, net wrap, very clean

(8) New Holland 316 rotary disc, MowMax II, 16' hydra swing, very clean

(9) 2009 Great Plains 60' air planter, 24 row 30' twin, very clean

(10) JD 1895 No Till air seeder, 45' w/1910 cart, very clean

(11) McFarland, 50' peg harrow, used very little

(12) 5'x5' Sunflower sweep

(13) Sunflower disc 1433, 9" spacing, 32', disc measuring 23 1/2"

(14) Rhino 15' Flexwing shredder, very clean

(15) Rhino 1310 3pt shredder, 1 bad gear box

(16) Ficklinca 1500, 800 bushel grain cart

(17) 3-210 barrel, fiberglass tanks w/ lids

(18) 4-500 barrel fiberglass w/ valves & fittings, been cleaned out, with 4" valves, piping, stairs and catwalk, located within 5 miles of sale sight will show by appt only. Call Terry or Blake Shores

(19) Hoeme Chisel with HYD 14'

(20) Fuel Trailer

(21) 2003 Ford F-350 XL, v10, 5 speed, w/477 Deweze bale bed, 110,448 miles

(22) 2006 Ford F-350 XLT Super Duty, AUTO, V8 Powerstroke, super cab, 4x4, w/482 deweze bale bed, 184,106 miles

(23) 201 Ford F-350 XLT Super Duty, 5 sp, 4x4, dually, w/482 deweze bale bed, 159,522 miles

(24) 2017 Dodge Ram 3500 diesel, single wheel, 4x4, 4 door, 112,742 miles, very clean, Vin1128

(25) 2005 F-250 w/ 6.0 bad engine, auto, 4x4, 4 door, lot of miles

(26) 2009 Freightliner Cascadia, 10 speed manual trans, little over 900,000 miles, detroit diesel engine, DD15 465 HP, 445/50/R 22.5 Tire Size

(27) 2007 KW W900L, 565 ISX Cummins, 18 Speed, 3 Pedal Autospeed, 144" sleeper, 325" wheelbase

(28) 1992 Freightliner, 60 series detroit, 9 SP, 627,004 miles, good tires, 2012 General Service 41' trailer, like new

(29) 1981 IHC 4300, runs good

(30) 1999 Freightliner, Classic XL, 500 detroit, 13 speed

(31) 1972 Chevy C50 Single Axel, 14' bed and lift, 53605miles

(32) 2005 ww 30' x 6' 8", triple axel, full top, need floor

(33) 2007 Trail-eze, TE70H145 HYD SYS mounted on trailer, w/ dovetail & wench, very clean

(34) 15 ton all electric travel sideways & forward & hoist, w/ 44' wide 73' rail

(35) 14' stock trailer, as is

Craftsman mower 48" w/ grass catcher, 18 HP

Grain Auger, 30'x6" without motor

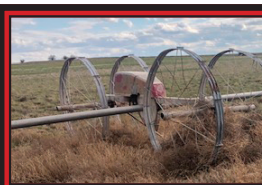
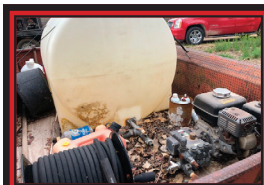
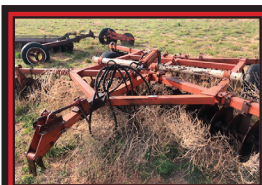
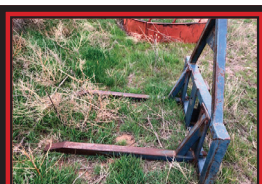
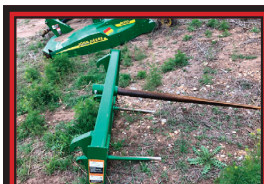
Auction

MAY 22, 10 AM 2021

TERRY AND SUSAN
KYLE & OTHERS



LOCATION: BEAVER
OK, 6 1/2 MI W ON
CC RD 14





TRACTORS & EQUIPMENT

2015 JD 5085E w/ 3pt. 540
PTO, 3 valves, QH, w/
H240 QA Loader, QA
Bucket, hayfork, 1288 Hrs

JD Mx10 3pt. 10' Shredder

Rotary Hoe

7' Homemade Box Blade

3 pt. Bush Hog Post Hole Digger
with 4 augers

3pt. bale carrier

H.D. Bale Carrier

14' Krause Tandem Disc

18' K20 Krause oneway

JD 21' V Disc

Pipe Drill Hitch

18' Hamey Chisel

Front Tractor Weights

2 Heavy Weights

IRRIGATION SPRINKLER

1/4 mile + Boss Straight
Irrigation Sprinkler, Side Row w/
7' Wheels w/ snap connectors,
Driver works

VEHICLES

1997 Ford F350- XL, 5 speed, 2
whl drive, w/ 12' steel flat bed,
dually, 142, 898 miles

2010 Ford F-350 XL Single Whl,
4x4 Super Duty, 5.8 L Triton V10
127,889 miles w/butler welding
hay bed, w/ Grizzly 1,200 lb. cake
box w/ auger very clean

TRAILERS

5 bale Mongoose Round Bale
Trailer w/dump

1992 Diamond D 6'x18' Full Top
Trailer, Good Floor

2 Graves Single Bale Trailers

16' Car trailer w/fold up ramp, 5
bolt whls. needs floor

2 wheel lawn mower trailer,
needs floor

3-2 wheel PU Bed trailers

1985 WW 16'x5' good floor, very
clean

2 wheel fuel trailer w/tank & 12
volt pump

CATTLE EQUIPMENT

Several Round Bale Feeders

Several Roud Bales (Wheat)

Lot T-Post

Lot Wood Post

Lot Barb Wire

Lot Steel Post 2' & 3'

Lot I-Beams

Lot Rebar Stays

Bucket of T-Post Clips

LAWN AND GARDEN

JD 214 Mower w/ kohler engine,
42" floor deck, runs good

TANKS

425gal poly water tank

150gal gas tank w/hand pump

2- 500gal overhead tanks (1 gas
1 diesel)

MISC

Pickup bumper (rear)

Aluminum loading ramps

Lots of tools, shovels, rakes,
forks, hatchets

Lots of baler twine

Lots of used wheels and tires

TOOLS AND SHOP EQUIPMENT

Forney welder 240v, 180amp,
w/leads

Makita chop saw

Craftsman table saw

Stihl MS 171 chain saw

2 Dewalt hand grinders, Skill
3" drill, shop vac, Makita hand
grinder.

2 wheel dolly

Lincoln 225amp Arc welder

Potable Generator 8250 serge
watts, 7250 continuous

Hand tire changer w/tire splitter

Poulin 16" electric chain saw

Continental press 60,000

Portable air tank

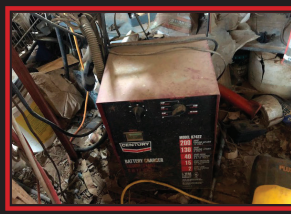
Aluminum adjustable ladder

Century battery charger

Lots of chain and boomers

Portable Campbell Hasfeld air
compressor

GS 160 Honda motor



UPCOMING SALES
BANKS MCGUARA LIVING ESTATE & FAMILY & OTHER, JUNE 5TH, S & W OF PERRYTON TX
ALLEN WILSON ESTATE & OTHERS, JUNE 12TH, BOISE CITY OK
DAVID GRISE ESTATE & OTHERS, JUNE 19TH, GUYMON OK

TERMS: Cash or check with proper I.D. day of sale. Settlement must be made day of sale. All descriptions of items are believed to be correct, but are in no way a warranty or guarantee. All items sold "As is, Where is" on personal inspection of the purchaser. All announcements made Sale Day are final and have priority. We are not responsible in case of accidents or theft of any item. Buyer will have 1 month to remove items.

Auctioneer
TERRY SHORES
License #10092

SHORES
AUCTION SERVICE

Route 1 Box 81H
Goodwell, OK 73939
(580) 349-2455 Cell (806) 339-3490

Visit us at www.globalauctionguide.com or www.shoresauction.com

Contact: Terry Shores - 806-339-3490 OR 580-349-2455 Blake Shores - 405-312-1796 Randy Schriner - 580-521-1671 Terry Kile - 580-527-1805