

STORM DATE
MARCH 1

Auctions

SATURDAY - 9am

FEB. 22nd
2025

TRACTORS, TRUCKS
FARM EQUIP., FORK LIFT

CARS & PICKUPS
TRAILERS, SHOP EQUIP.

LOCATION: GUYMON, OK - 8TH & EAST STREET
Warehouse just north of the railroad tracks, west side

AREA FARMERS



2018 White 9936, 36 Row, 20" w/monitors. Has planted 18-20,000 ac. with Precision Down-Pressure, Row-cleaners & closing whl sys. system. Field Ready



1988 Dodge 3500, Cum. 4drm, Auto, 4x4, w/Hydro bale bed, new mtr., 239,664 mi.



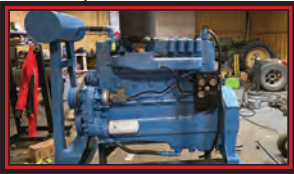
1985 CMTR Aluminum End Dump



2014 Manac, 11Rx24.5, Very Good All Steel End Dump



1999 Case IH 9150 3pt, 18.4x42 row crop, w/PTO, 8590 hrs



855 Cum. nat. gas w/new complete rebuilt



1970 Chevy, single axle, w/new mtr., very clean, low miles

Auctioneer
TERRY SHORES
License #10092



2004 Chevy 2500 Quad Cab, Auto 4x4, 7' flatbed, 112,490 mi., Very Clean



1999 Tempte, 24.5 Tires, Bud Whls.



2009 Alum. Trailstar 30' End Dump



2023 14' New Ironbull, 7000# axles, Hyd. Dump



Daewoo 3600 lb 15', runs good



3406 Cat nat gas 1/2 season since new rebuild



2009 Freightliner w/14L Det 10 spd, new tires, new ECM



2010 Dodge 1/2 Ton, 2whl drive 237,000 mi. 2/rebuilt title



RST Tree Grinder w/Cum. mtr., runs good, needs clutch



2022 New Rawmaxx, Elec./Hyd Dump



New Ironbull, 205/75 R15, 3500# axles 18' Car Hauler



Case 580D extend-a-hoe, hyd. cyl. rebuilt



496 Chevy, nat. gas, comp. new rebuilt conv to dstrbr in flat top lifters



2013 Ford F750 4dr. Cab & Chassis, Cum.



2017 Ford Expedition, 15,600 mi., 2whl drive, xlt, w/rebuilt title



2008 Silage Trlr, 35', w/walking floor w/rebuilt title



New Industrias America 440 40' Hdr Trl



Vermeer V-4150 ditcher backhoe, rebuilt pump, new chain & sprockets



2 - 454 Chevy nat. gas, w/new rebuild



Chevy Spray Foaming truck w/gen., comp., w/rebuilt foaming pump, fully cont.



2022 Case IH 2140, 24 Row, 20" w/monitors, All Precision Planter, planted appx 13,000 ac., Corn, Milo and Soybean Plates. Field Ready



2005 Chrysler GEM golf cart 72 V electric, enclosed cab, runs good



Shop-bilt 3 axle High Side Trailer



2014 Polaris Sport Terrain 400 2010 Honda Rancher, runs good



2008 NH 185 w/BUCKET, 2999 hrs.



292 Chevy nat. gas, new rebuilt



2005 Genie Z-45/25J IC Power 4x4 runs great very clean

SHORES AUCTION SERVICE

Visit us at www.shoresauction.com

Route 1 Box 81H
Goodwell, OK 73939
580-349-2455

Info Contact: TERRY SHORES - 580-349-2455 BLAKE SHORES - 405-312-1796 DREW FARRIS - 405-448-0951 DEREK FARRIS - 405-679-5434

AUCTIONEER NOTE: Online Bidding will start at 1:00 pm.

ONLINE BIDDING ON SELECT ITEMS

AT equipmentfacts.com Click online to view the catalog and to pre-register.

**10% buyers premium will be charged on all items under \$5000.
8% buyers premium items from \$5000 to \$10000.
6% buyers premium on items over \$10,000.**

Taxes will be charged unless the Buyer brings us a copy of their Tax #.
Blake Shores - 405-312-1796
or email blakeshores23@gmail.com



2014 22' Load Max, 7000# Axles w/Title



53' Flatbed w/inverted 5th Whl



Desert Storm Fold-out Shop Box, as is



Chemical Trailer, as is



12' Homemade Cargo Trl., no title



Cargo Wells Office/Conc. Trailer



1990 Carri-Lite 27', w/Title



20' Croft STR8 Bumper Pull w/Title



Deweze Bale Bed & Service Bed



1600 gal Water Trailer



2008 Ford E350, Engine Knocks



2002 Isuzu Box Truck, GM5.7 L Eng., very clean



2003 Ford F250, Power Stroke 7.3, 222,239 mi., runs



Champ 5000lb Forklift w/Slant 6 Chrysler, runs - needs carb. work



80' Snorkel Lift, Motor will run, as is



60' Snorkel Lift, as is



42' Snorkel Lift



CAT RT80 Telehandler w/no boom extend-a-cylinder, should run, as is



1969 Firetruck Auto w/Water pump with VW mtr, as is



1975 Chevy, will run



1975 GMC, will run



Belly Dump Trailer, as is



Shop-built 14' Trailer



Shop-built Welding Trailer



Seed Tender Vacuum Trailer



Johnson 8'x20' Dual Tandem



New Industrius America 7' Shredder



New Industrius America 7' Box Blade



New Industrius America 10' Box Blade



16' Bumper Pull Trailer



Log Splitter



4 - Ricks Oak Firewood



Peerless Industrial 3-Phase Band Saw



Shop-built Implement moving Trl.



Factory Implement Moving Trl.



Shop-built Shop Trailer



Utility Bed w/Ford F250 Frame



15 12' Panels



Float Cattle Waterers



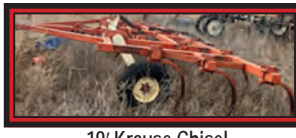
12"x40' Pipe



2-3pt Bale Levers



2 - 6' Mowers



19' Krause Chisel



3 pt. Back Blade & Road Boss



New Skid-Loader Pipe Grapple



3700 20' Crustbuster Grain Drill, 8" space



Sprayer w/Booms



5-door Stainless Steel Cabinet



Hay Bale Feeders



3-Bale My-D-Handi Trailer



2 - Cat c3.3B Dsl. Eng., need rebuilt



2 - 500 gal LP Tanks



Hyd. Hay Bale Loader



500 gal Water Tank



15' Bush Hog Shredder



Donahue & Shop-built Imp. Trailers



2000 gal Army Fuel Tanks



1500 gal Fiberglass Tank



2700 Bush Hog Shredder



2-whl Trailer



New Honda Water Pump



2" Water Pump



Like New Troybilt Chipper



Colts Tire Machine



Old Squeeze Chute



3pt Hyd Cement Mixer



Lot of Pallet Forks & AC Air Cond.



Large Rack w/Bumpers



Large Rack of Truck Side Parts



18' Steel Rack



Lot of Bumpers



Lot of Receiver Hitches



Lot of Rolls of Wire



Roll-a-round Bolt Bin



Sand Blaster



4 - Mineral Tubs



Lot of T-Posts



Lot of Stock Tanks



Lot of Hog Panels



Roller Cart turned on side



Hay Bale Moover



New Cattle Hauler



Hay Bale Spike



Rotating Clam



Hyd. Clam



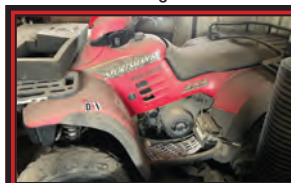
2-Cement Saws w/Wisc. Motors



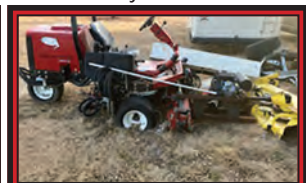
Child's Scooter w/Side Car



1 cyl. Diesel Motor



Polaris Sportsman 500, might run



Troybilt Mower Diesel, should run



Murray Lawn Mower, as is



Table Shelf



Scroll Saw & Misc.



Roll-around Shelf



Liquid Tote



Misc Grinding Wheels



Pipe Threaders



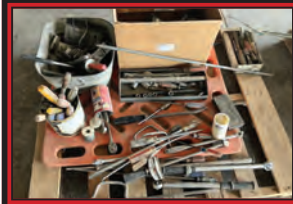
Lot Crescent & Pipe Wrenches



Lot of Air Hose Reels



Lot of Scrap Iron



Lot Tools



Tarp, Tools



Lot of Scrap Iron



Pallet Land Meas. whls & tools



Lot Hyd Jacks



Cherry Picker



Band Saw



Lot of Gooseneck Pipe Hitches



Misc. Hog Water and Pipes



Misc. Stainless Steel Hog Feeders



Wringer Washer



100# Anvil



2 - Forges



Lot of Anvils, 1 w/Tool



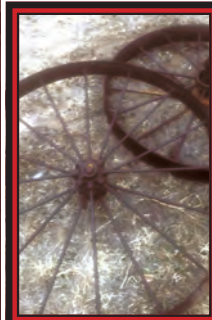
Beautiful Steel Wheels



Upright Compressor



Windmill Head & Tower



Steel Wheels



Upright Band Saw



Forney Welder

UPCOMING SALES

ROBERT ALEXANDER
& OTHERS
IN MARCH
N. of Texhoma, OK

IVAN & WANDA SMITH
& OTHERS
S. & E. of Guymon, OK

Taxes will be charged unless we receive a copy of your Tax #.

TERMS Cash or check with proper ID day of sale. Settlement must be made day of sale. All descriptions of items are believed to be correct, but are in no way a warranty or guarantee. All items sold "As is, Where is" on personal inspection of the purchaser. All announcements made Sale Day are final and have priority. We are not responsible in case of accidents or theft. **Buyer will have ONE MONTH to remove items.**

LUNCH
AVAILABLE

Auctioneer
TERRY SHORES
License #10092

AUCTION SHORES SERVICE

Visit us at www.shoresauction.com

Route 1 Box 81H
Goodwell, OK 73939
580-349-2455

Info Contact: TERRY SHORES - 580-349-2455 BLAKE SHORES - 405-312-1796 DREW FARRIS - 405-448-0951 DEREK FARRIS - 405-679-5434

MANY OTHER ITEMS
TOO NUMEROUS
TO MENTION