

Auctions

SEPT 2025

SEE INFORMATION BELOW

Sat, Sept. 6th - 9am
 From Hardesty: 8 E on
 Hwy 412 to MM 55 S Side
 From Bryans Corner:
 12 W on Hwy 412 to
 MM 55 S Side
ROGER SHORB
 & OTHERS
 580-461-1025



2006 New Holland LS160,
872 hrs



2002 Hustler Z 60", low hrs



PJ 20' Tilt Bed, Like New



2002 Dodge 3500, 5.9 Cum,
5 spd., 9' hydro bale bed,
200,709 mi



2014 Dodge 2500, 5.7 hemi auto,
2whl dr. 156,403 mi. very clean

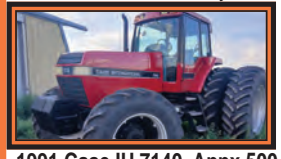


2022 CFmoto
4x4 500 U Force 1860 Surrey
61.6 hrs Carriage

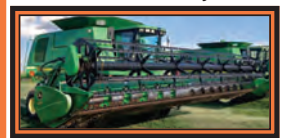
Sat, Sept. 11th - 10am
 From Hooker, OK: E on Hwy 64
 1.5 mi to MM47, 3/8 mi N
BOB FOWLER
ESTATE



2014 Case IH 4618 hrs, very clean



1991 Case IH 7140, Appx 500
hrs on New Mtr, Very Clean



2005 JD 9760 STS w/630 Header,
cut wheat only



Landoll 5530-40, 10" Drill w/
Conversion, very clean



2001 Sunflower 3692-45 9'x5'



2006 KW T2000, New Tires, Cat 9
spd Allison, 889,884 mi
2013 Jet 42', Wireless Remote
Tarp, Very Clean



PJ 24' Tilt, 7000 lb Axle, Like New

Fri, Sept. 12th - 9am
 From Hooker, OK: Hwy 45 5N to
 MME, 3.5 W From Moscow, KS:
 Hwy 20 app 30mi. S to MM E, 3.5W

CLAUDE ADAMS
ESTATE & OTHERS



1978 Case 2590 w/3pt PTO



1978 JD 4840, 3pt, PTO



2 - New Holland Swathers, as is



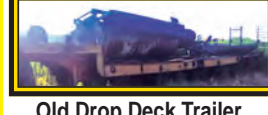
JD 535 Baler Hesston BP
25 Bale Proc.



10-Wheel Hay Rake



JD 3pt Drill



Old Drop Deck Trailer

Sat, Sept. 13th - 9am
 Hooker, OK: Last Building
 on S Side W on Hwy 54
CLAUDE ADAMS &
BALZER ESTATES &
OTHERS



2022 JD 5065 w/111 Hrs FWA
w/Front End Loader, Like New



1938 Case VAI MM, restored



1940 Ford 8N w/V6 Conv. Rstrd



1955 Chevy PU, 10% restored



2006 Sunny Brook, very clean



2017 Toyota Camry
107,500 mi. very clean

Sat Sept. 20 9am
 Booker, TX: GPS Coordi-
 nates: 15092 CO Rd 29
JOHN RAY & RUTH-
ANNA HOCKING
 LIVING ESTATE & OTHERS



Will Sell at
12 noon.
Sat
2012 GMC Acadia, 93,283 mi.,
very clean



1990 Case IH 2394 w/18.4R42
3pt 1000 PTO



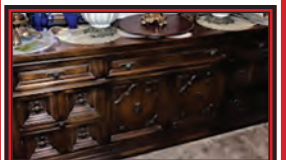
1992 Case IH 7120 FWA 14.R42



Krause 28' 4956 Dbl Offset,
good blades



3 Lathes and Shop Full of Equip.



Complete House full of
Furniture Start Selling
at 9am on Saturday

Auctioneer
TERRY SHORES
 License #10092



AUCTION
 Lunch
 available

SHORES
FARRIS

Visit us at www.shoresauction.com

SERVICE

Route 1 Box 81H
 Goodwell, OK 73939
 580-349-2455

Auctions

SATURDAY - 9am

SEPT. 6th
2025

SKID LOADER & ATTACH.
HOUSEHOLD, LAWN EQUIP.

ANT. SURREY CARRIAGE
TRAILERS, SHOP EQUIP.
CATTLE EQUIPMENT

FROM Hardesty: 8 E on Hwy 412 to MM 55 S Side FROM Bryans Corner: 12 W on Hwy 412 to MM 55 S Side

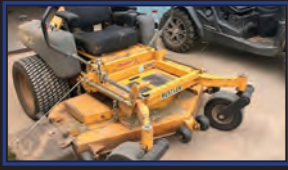
ROGER SHORB & OTHERS
580-461-1025



2006 New Holland LS160, 872 hrs



2022 CF Moto 4x4 500 U Force 61.6 hrs



2002 Hustler Z 60", low hrs.



PJ 20' Tilt Bed, Like New



2002 Dodge 3500, 5.9 Cum, 5sp,
9' hydro bale bed, 200,709 mi



2014 Dodge 2500, 5.7 hemi auto,
2 whl dr., 156,403 mi. very clean



1998 Volvo Mod VE D12, 425 HP



Quick Attach 6' Shredder



6' Disc, 3pt



2 whl Tilt Mower Trailer



Lot of 2" Pipe & Succer Rods



8' Aeromotor Windmill Head



Washer & Dryer



Heritage Pallet Forks



Pull Grader Blade



Ford Pickup Bed Trailer



Lots of Wood Posts



10 - Portable Panels



6' Wood Table



5' Bucket w/Thumb Grapple.
Homemade Bunk Cleaner



New XP1300 Tri Fuel Generator



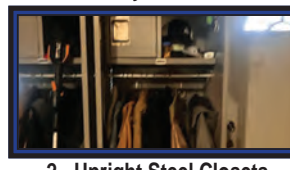
GN 24' x 6'8", Oak Floor, Could
Be Split Level



Lots of T-Posts



Round Hay Horse Feeder



2 - Upright Steel Closets



1860 Surrey Carriage



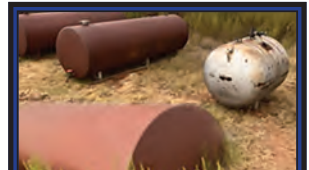
Cherry Picker & Chop Saw



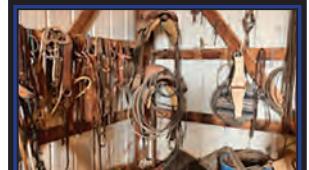
5-Drawer Tool Box, Lots of Tools



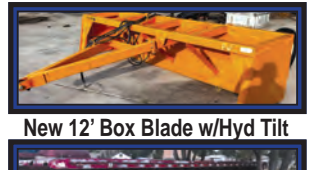
Lincoln Welder 240 V



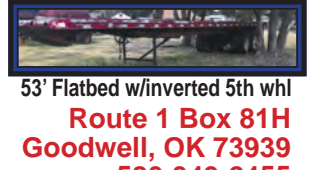
Lot of Tanks



Lots of Tack w/Bridles & Saddles



New 12' Box Blade w/Hyd Tilt



53' Flatbed w/inverted 5th whl

TERMS Cash or check with proper I.D. day of sale. Settlement must be made day of sale. All descriptions of items are believed to be correct, but are in no way a warranty or guarantee. All items sold "As is, Where is" on personal inspection of the purchaser. All announcements made Sale Day are final and have priority. We are not responsible in case of accidents or theft.
Buyer will have one month to remove items.

Lots More Shop
Eq., Tools, &
Household

**SHORES
FARRIS**

SERVICE

Auctioneer
TERRY SHORES
License #10092



AUCTION
Lunch
available

Visit us at www.shoresauction.com

Info Contact: TERRY SHORES - 580-349-2455 BLAKE SHORES - 405-312-1796 DREW FARRIS - 405-448-0951 DEREK FARRIS - 405-679-5434

Auctions

THURSDAY - 10am

SEPT. 11th

2025

PICKUPS, TRAILERS

TRACTORS, COMB. EQUIP

From Hooker, OK: E on Hwy 64 1.5 mi to MM47, 3/8 mi N

BOB FOWLER ESTATE

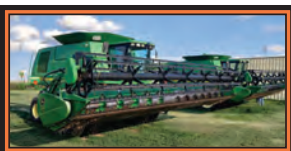
AUCTIONEER'S NOTE: This is no doubt the cleanest equipment I have ever had the opportunity to sell. We have no small stuff, so be on time.



2014 Case IH Magnum, 4618 hrs, Large 1000 PTO, 5hyd valves, No DEF, Very Clean



1991 Case IH, appx 500 Hrs on New Motor, Very Clean



2005 JD 9760 STS w/630 Header, 2000 Eng., 1690 Sep Hrs, cut w/ht only



Landoll 5530-40 10" Spacing w/New Update Conversion, Very Clean



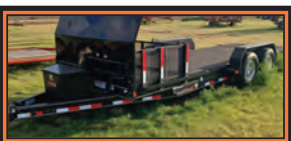
2021 Sunflower 3692-45 9x5 Sweep w/Pickers, Very Clean



Rhino 20 RC120 Flail Shredder, New



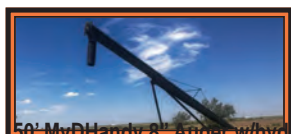
2005 KW T200, New Tires, Cat Motor, Allison Auto 9spd, Air Ride, 889,884 mi, very clean
2013 Jet 42' Grain Trailer, Wireless Remote, Sherlock Electric Tarp, Very Clean



PJ 24' Tilt, Steel Floor, New Tires, 7000lb Axle, Like New



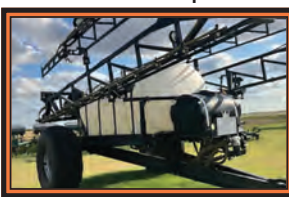
New Holland 6G320 Flex Coil, Spring Time, Like New



50' MyDHandy 8' Auger w/hydr up and down & 540 PTO



Donahue 10'x30' Pipe Frame



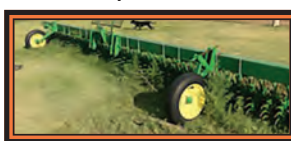
Wylie 100' Boom, 1600 gal. w/ monitor, Very Clean



MyDHandy Semi Hopper Auger



2022 Unververth 3755 Seed Tender, Triple Axle, Like New



JD 30' 400 Rotary Hoe, Good Shape



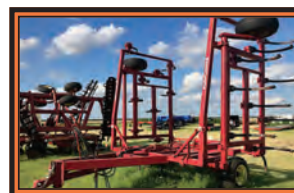
7' Rhino Mower



Woods 18' Batwing BW1800, Needs Blades



Sunflower 26' Chisel w/Listershears



Sunflower 2331 30' Chisel



JD 8-Row 7100 3pt Planter



3) - Noble DK4 Grain Drills



4) - Noble DK5 Grain Drills



500 gal. fuel tank

ONLINE BIDDING ON SELECT ITEMS AT equipmentfacts.com

Click online to view the catalog and to pre-register.

FOR ONLINE BUYERS ONLY:

A 10% buyers premium will be charged on all items under \$5,000.

8% buyers premium items from \$5,000 to \$10,000.

6% buyers premium on items over \$10,000.

Taxes will be charged unless the Buyer brings us a copy of their Tax #.

Blake Shores - 405-312-1796 or email blakeshores23@gmail.com

TERMS Cash or check with proper I.D. day of sale. Settlement must be made day of sale. All descriptions of items are believed to be correct, but are in no way a warranty or guarantee. All items sold "As is, Where is" on personal inspection of the purchaser. All announcements made Sale Day are final and have priority. We are not responsible in case of accidents or theft.
Buyer will have one month to remove items.

Lunch Available

AUCTION

Lunch available

SHORES FARRIS

SERVICE

Visit us at www.shoresauction.com

Auctioneer
TERRY SHORES
License #10092



Info Contact: **TERRY SHORES - 580-349-2455** **BLAKE SHORES - 405-312-1796** **DREW FARRIS - 405-448-0951** **DEREK FARRIS - 405-679-5434**
ERIC FOWLER - (806) 674-5787 - Eric.Fowler@Landoll.com

Route 1 Box 81H
Goodwell, OK 73939
580-349-2455

Auctions

FRIDAY - 9am

SEPT. 12th

2025

PICKUPS, TRUCKS
TRACTORS & SWATHERS

ANT. FARM EQUIPMENT
LOTS OF SCRAP IRON

FROM HOOKER, OK: HWY 45 5N to MM E 3.5 W FROM MOSCOW, KS: HWY 20 app 30 mi. S to MM E, 3.5 W

CLAUDE ADAMS ESTATE

Stride Bank, Inc, Personal Representative



1978 Case 2590 w/3pt PTO



1978 JD 4640



2 - New Holland Swathers, as is



JD 565 Baler Hesston BP 25
Bale Processor



Monroe Spray-Coupe for parts



10-Whl Hay Rake



4-Sections DK4 Drills



5-Sections Noble Sweep Plow



We have a complete house full of household merchandise that will start selling at 9am on Friday, along with a 2nd ring of the equipment.



Old Cab-over Freightliner, as is



F100 Ford w/Silage Box as is



1970 Ford Bucket Truck, as is



10-Shank Big Ox River



13' JD Shredder



JD Manure Spreader, as is



Old Mack Truck, as is



1978 GMC 2Ton. as is



1964 GMC, as is



12-row 3pt Lister Planter



Homemade GN 20' Trailer



Old Drop Deck Trailer



1979 Chevy, as is



1965 Chevy, as is



3-Whl Motorcycle Frame, as is



2-Whl Homemade Trailer



Grain Storage Bins



Old Silage Cutter & Misc. Equip.



1979 Ford F250 w/Bale Bed



1998 Dodge Ram



1969 Dodge Ram



Old Pickup Frames & Mack Truck



Old Ford Truck, as is



Old Mack Truck, as is



El Camino and Pickup, as is



Lot of Steel Wheels

TERMS Cash or check with proper I.D. day of sale. Settlement must be made day of sale. All descriptions of items are believed to be correct, but are in no way a warranty or guarantee. All items sold "As is, Where is" on personal inspection of the purchaser. All announcements made Sale Day are final and have priority. We are not responsible in case of accidents or theft.
Buyer will have one month to remove items.

Lots More Scrap Iron
Too Numerous to
Mention

AUCTION

SHORES FARRIS

SERVICE

Auctioneer
TERRY SHORES
License #10092



Lunch
available

Visit us at www.shoresauction.com

Route 1 Box 81H
Goodwell, OK 73939
580-349-2455

Info Contact: TERRY SHORES - 580-349-2455 BLAKE SHORES - 405-312-1796 DREW FARRIS - 405-448-0951 DEREK FARRIS - 405-679-5434

Auctions

SATURDAY - 9am

SEPT. 13th
2025

PICKUPS, TRUCKS
SKID LOADER & ATTACH.
HOUSEHOLD, LAWN EQUIP.

ANT. SURREY CARRIAGE
TRAILERS, SHOP EQUIP.
CATTLE EQUIPMENT

Hooker, OK: Last Building on S Side W on Hwy 54

CLAUDE ADAMS ESTATE & BALZER ESTATE & OTHERS



111 Hours

2022 JD 5065 w/111 Hrs FWA w/Front
End Loader & Mower, Like New



JD 2023 X380 24 hrs, Like New



1965 IHC Cub Cadet, very clean



1938 Case VAI MM, restored



1940 Ford 8N w/V6 Conv. Restored



1945 SC Wide Front



1929 JD Model GP



1928 Ford Model A, might run



1955 Chevy PU, 10% restored



12' Hoeme Chisel



Alloway Rau 8-row



Dewalt Planer, Like New



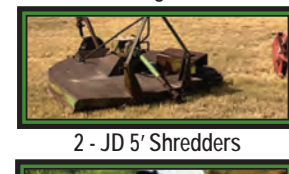
JD Collectibles,
12 New in box.
Will Sell at noon



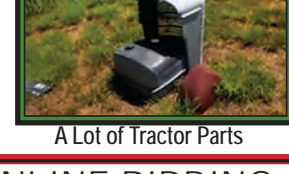
Toyota Camry, 107,500 mi.



Lot of Lug Wheels



2 - JD 5' Shredders



A Lot of Tractor Parts



Sunny Brook 5th-whl Camper



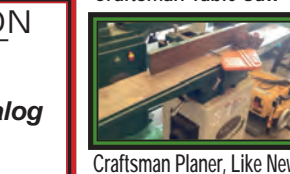
Mowboard & Frt. Blade



2 pt Dirt Mover



1943 JD LA w/Front Blade, 540 PTO



Craftsman Table Saw



3 - Sets Lincoln
Logs in box.
Selling at noon



Hesston 565A w/Good Belts



2 - JD 70 Tricycle Front



1947 IHC Cub Cadet w/Belly Mwr



Haybuster 2650 Bale Processor,
Used Very Little



1955 M&M 4-Star G-Series 3pt Row Crop



JD Motor



1950 Farmall M, 50% restored

ONLINE BIDDING ON
SELECT ITEMS AT
equipmentfacts.com

Click online to view the catalog
and to pre-register.

FOR ONLINE BUYERS ONLY:
A 10% buyers premium will be
charged on all items under \$5,000.
8% buyers premium
items from \$5,000 to \$10,000.
6% buyers premium on
items over \$10,000.

Taxes will be charged unless
the Buyer brings us a copy
of their Tax #.

Blake Shores - 405-312-1796
or email
blakeshores23@gmail.com

SHORES FARRIS

AUCTION

Lunch
available

Visit us at www.shoresauction.com

SERVICE

Auctioneer
TERRY SHORES
License #10092



Info Contact: TERRY SHORES - 580-349-2455 BLAKE SHORES - 405-312-1796 DREW FARRIS - 405-448-0951 DEREK FARRIS - 405-679-5434

Route 1 Box 81H
Goodwell, OK 73939
580-349-2455

AUCTIONEER'S NOTES

We will start selling on the trailer with Household Items at 9:00am. Will start the 2nd ring at 10:00am on Tools & Shop Equipment.

Will start selling live and On-Line Bidding on Tractors and Equipment at 1:00pm.

6



Craftsman Chain Saw, Dewalt Hedge Trimmer; Stihl Chainsaw; Dewalt Saw; Dewalt Vac; Makita Drill; Table Router; Dewalt Tool Bag; Bug-out Bag; Tap & Die; Camping Utensil Set; Paint Sprayer; Dremmel; Cedar Chest, 2 Min Fridges



Shelving Organizers; Nuts, Bolts, Screw Organizer; Cabinet Drawer Extenders



Troy Bilt Rototiller



Bread Maker



Toy Tractors



Rolling Tool Box



Dining Table/Decor



Troy-Bilt Tillers



Troy-Bilt Power Washer



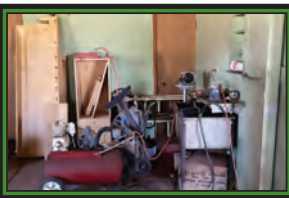
Wood Stove



Grizzly Machine Shop Set & Mini Lathe



Compressors & Grinders



Compressor

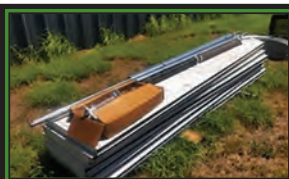
Shop Tools

Mtr Scooter, Ladders, Work Bench

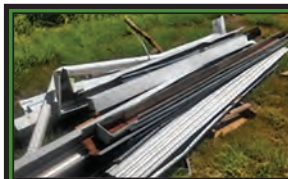
Shop Vac



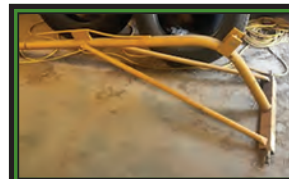
A Trailer Load of New Kitchen Cabinets



New Garage Door



Lot of Rain Gutter Trim



3pt Boom



JD Fertilizer Spreader



Lunch Available

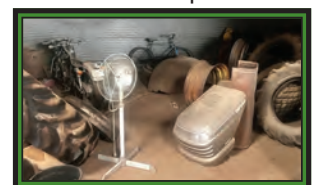
Auctioneer
TERRY SHORES
License #10092

TERMS Cash or check with proper I.D. day of sale. Settlement must be made day of sale. All descriptions of items are believed to be correct, but are in no way a warranty or guarantee. All items sold "As is, Where is" on personal inspection of the purchaser. All announcements made Sale Day are final and have priority. We are not responsible in case of accidents or theft.
Buyer will have one month to remove items.

MORE ITEMS TOO NUMEROUS TO MENTION

SHORES FARRIS

Visit us at www.shoresauction.com



Grain Bin full of New Tractor Tires and Tractor Parts

Route 1 Box 81H
Goodwell, OK 73939
580-349-2455

Info Contact: TERRY SHORES - 580-349-2455 BLAKE SHORES - 405-312-1796 DREW FARRIS - 405-448-0951 DEREK FARRIS - 405-679-5434

Auctions

SATURDAY - 9am

SEPT. 20th
2025

CARS, PICKUPS, TRUCKS
HOUSEHOLD, LAWN EQUIP.

LOTS OF SCRAP IRON
LOTS OF SHOP EQUIPMENT

Booker, TX: GPS Coordinates: 15092 CO Rd 29

FROM BOOKER: 2W CR28, 2.5N to CRB, 1E

JOHN RAY & RUTHANNA HOCKING LIVING ESTATE & OTHERS



1990 Case IH 2394 w/18.4R42
Duals, 3pt 1000 PTO



1962 Allis Chalmers w/Belly Mower



Krause 28' 4956 Dbl Offset, good blades



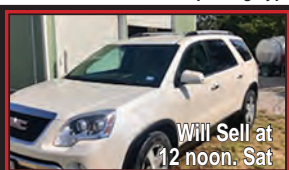
Crustbuster 15' Offset Disc



42' Crust Buster Chisel



JD 7 Bottom Moldboard 2pt Drag Type



Will Sell at
12 noon, Sat

2012 GMC Acadia, 93,283 mi., very clean



1992 Case IH 7120 FWA 18.4R 42



1982 IH 1086 18.4x38 Duals



1978 JD 4450 18.4-38 Duals



1973 JD 8640 18.4x38 Duals, 3pt,
3 Hyd Valves, 1000 PTO



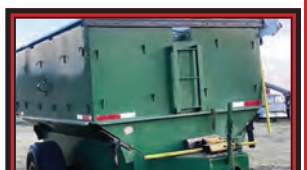
1964 4020 LP Gas 18.4x34 Singles



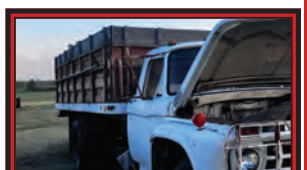
2 - Flex King 5'x6' Sweep Plows



5-Sections of JD Hoe Drills



Phares Wilkins 400 bu. Grain Cart



1959 Ford F600, as is



Old Trailer



Krause 28' 4907A, Dbl Offset, good blades



Bush Hog 14815XD 15' Like New



7' Back Blade



Allis Chalmers 20' Offset Disc



2 - Noble 5'x6' Sweep Plow
1 w/Pickers, 1 w/Tines



JD 8 Row Lister Planter on
Diamond Tool Bar



JD Backhoe, as is



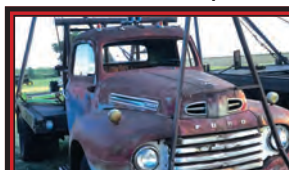
Hancock Dirt Scraper



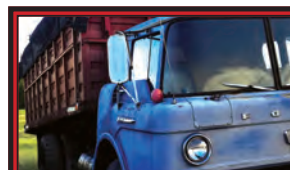
Phares Wilkins 400 bu. Grain Cart



1948 Ford Truck, as is



1950 Ford Winch Truck, as is



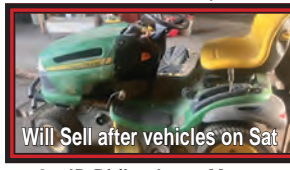
1970 Ford Cab-over, as is



Will Sell after car on Sat



Will Sell after car on Sat



Will Sell after vehicles on Sat

2 - JD Riding Lawn Mowers

TERMS Cash or check with proper I.D. day of sale. Settlement must be made day of sale. All descriptions of items are believed to be correct, but are in no way a warranty or guarantee. All items sold "As is, Where is" on personal inspection of the purchaser. All announcements made Sale Day are final and have priority. We are not responsible in case of accidents or theft.

Buyer will have one month to remove items.

SHORES FARRIS

Auctioneer
TERRY SHORES
License #10092



AUCTION
Lunch
available

Visit us at www.shoresauction.com

SERVICE

Route 1 Box 81H
Goodwell, OK 73939
580-349-2455

Info Contact: TERRY SHORES - 580-349-2455 BLAKE SHORES - 405-312-1796 DREW FARRIS - 405-448-0951 DEREK FARRIS - 405-679-5434

AUCTIONEER'S NOTES:

Saturday will start selling in the house 9am w/2nd ring at 10am in North Barn - Parts and Shop Equipment. Car, Van and Pickup will sell at 12 noon

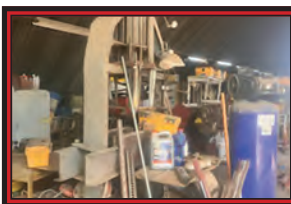
8



Homemade Seed Cleaner



Homemade Winch Trailer



12 Ton Press w/contents



Metal Lathe



Metal Cabinet w/contents



Metal Lathe



Table w/contents



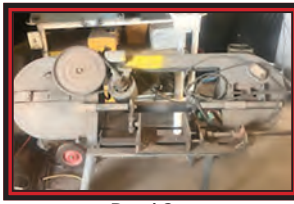
Organizer cabinets w/contents



Lots of Hyd Cylinders



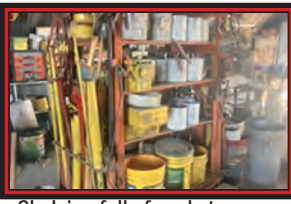
Lyons Drill Press



Band Saw



2 - Bench Grinder



Shelving full of gaskets, spray paint, drill bits tools



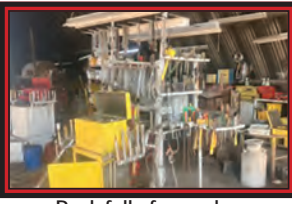
Organizer Cabinets w/contents



2 - JD Riding Lawn Mowers



Cabinet w/contents



Rack full of wrenches
Rack does not sell



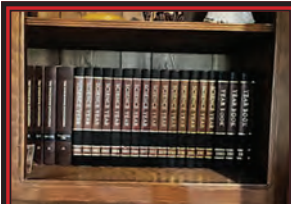
Lincoln Welders



Shelving full of parts & contents



Shelving full of parts & contents



TERMS Cash or check with proper I.D. day of sale. Settlement must be made day of sale. All descriptions of items are believed to be correct, but are in no way a warranty or guarantee. All items sold "As is, Where is" on personal inspection of the purchaser. All announcements made Sale Day are final and have priority. We are not responsible in case of accidents or theft. Buyer will have one month to remove items.

SHORES FARRIS

AUCTION

SERVICE

Auctioneer
TERRY SHORES
License #10092



Lunch available

Visit us at www.shoresauction.com

Many More Items Too
Numerous To Mention

Route 1 Box 81H
Goodwell, OK 73939
580-349-2455

Info Contact: TERRY SHORES - 580-349-2455 BLAKE SHORES - 405-312-1796 DREW FARRIS - 405-448-0951 DEREK FARRIS - 405-679-5434